

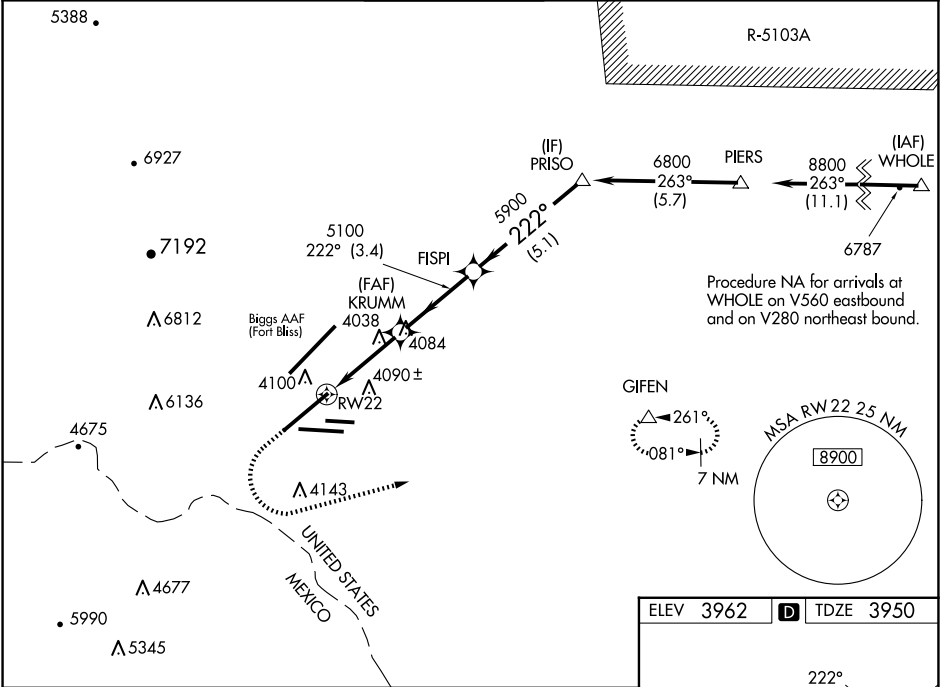
WAAS CH <b>78244</b> <b>W22A</b>	APP CRS <b>222°</b>	Rwy Ldg TDZE Apt Elev	<b>12020</b> <b>3950</b> <b>3962</b>
--	------------------------	-----------------------------	--

RNAV (GPS) Y RWY 22

EL PASO INTL (ELP)

RNP APCH - GPS.	MALSR	MISSED APPROACH: Climb to 4600 then climbing left turn to 8000 direct GIFEN and hold, continue climb-in-hold to 8000.
ASR		

D-ATIS <b>120.0 254.3</b>	EL PASO APP CON <b>124.25 298.85</b>	EL PASO TOWER <b>118.3 239.275</b>	GND CON <b>121.9 348.6</b>	CLNC DEL <b>125.0 379.1</b>
------------------------------	---	---------------------------------------	-------------------------------	--------------------------------



4600 ↑		8000 ↖		GIFEN △		VGSI and RNAV glidepath not coincident (VGSI Angle 3.00/TCH 70).			
						PRISO 6800			
CATEGORY		A		B		C		D	
LPV	DA	4150/24 200 (200-½)							
LNNAV/ VNAV	DA	4200/24 250 (300-½)						4221/24 271 (300-½)	
LNNAV	MDA	4300/24 350 (400-½)		4300/30		350 (400-¾)			
CIRCLING		4420-1		4440-1		4480-1½		4680-2¼	
		458 (500-1)		478 (500-1)		518 (600-1½)		718 (800-2¼)	

