

APP CRS  
265°

Rwy Ldg  
TDZE  
Apt Elev

9025  
3962  
3962

RNAV (RNP) Z RWY 26L

EL PASO INTL (ELP)

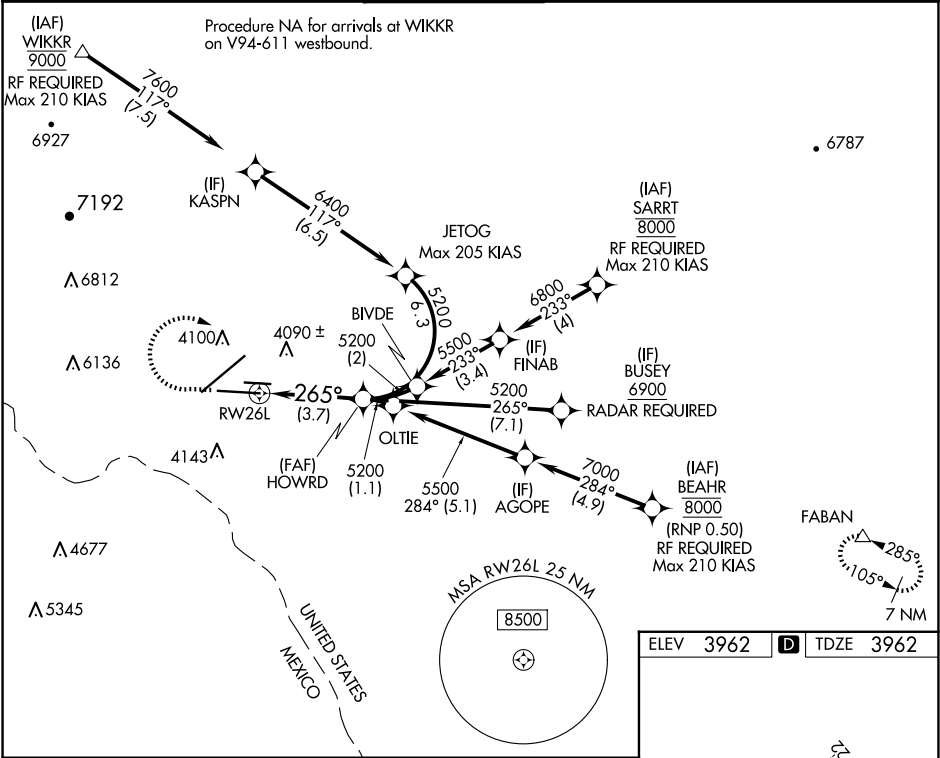
ASR

For uncompensated Baro-VNAV systems, procedure NA below -8°C (18°F) or above 50°C (122°F). For inop MALS, increase RNP 0.30 visibility all Cats to 1 mile. GPS Required.

MALS

MISSED APPROACH: Climb to 4400, then climbing right turn to 7500 direct FABAN and hold.

D-ATIS	EL PASO APP CON	EL PASO TOWER	GND CON	CLNC DEL
120.0 254.3	124.25 298.85	118.3 239.275	121.9 348.6	125.0 379.1



4400 7500 FABAN

VGSI and glidepath not coincident (VGSI Angle 3.00/TCH 75).

See planview for multiple IF locations.

RW26L

265°

5200

GP 3.00° TCH 55

3.7 NM

CATEGORY A B C D

RNP 0.30 DA 4275-½ 313 (400-½)

AUTHORIZATION REQUIRED

ELEV 3962 TDZE 3962

12020 X 150 0.3% DOWN

5499 X 75 26R

9025 X 150 0.5% UP

0.3% DOWN

TWR

26L 265°

MIRL Rwy 8L-26R

REIL Rwys 4 and 8R

HIRL Rwys 4-22 and 8R-26L