

APP CRS
222°

Rwy Ldg
TDZE
Apt Elev

12020
3950
3962

RNAV (RNP) Z RWY 22

EL PASO INTL (ELP)

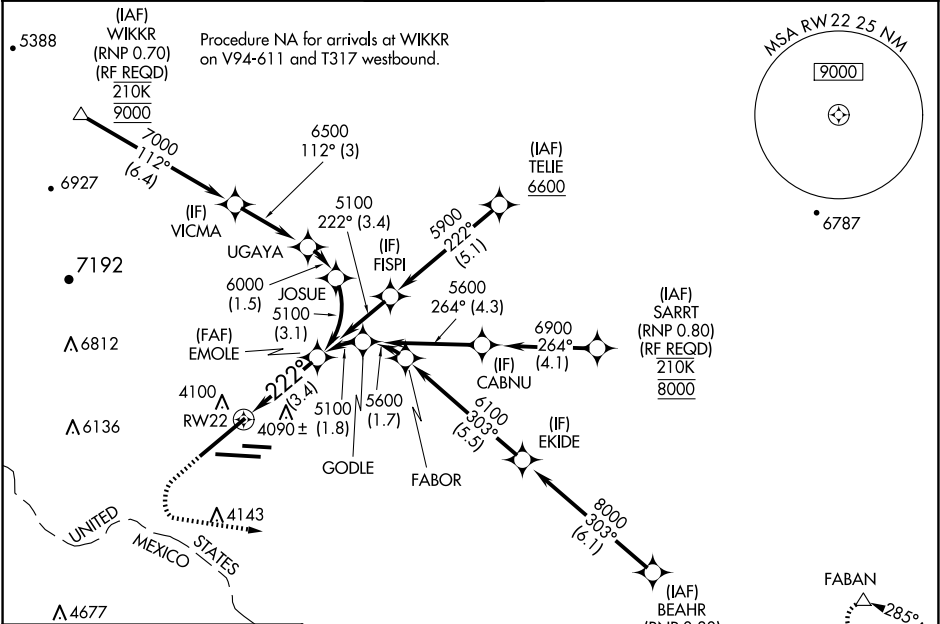
RNP AR APCH

For uncompensated Baro-VNAV systems, procedure NA below -8°C or above 54°C. For inop ALS, increase RNP 0.10 all Cats visibility to RVR 4000 and RNP 0.30 all Cats visibility to RVR 4500.

MALSR

MISSED APPROACH: Climb to 4400 then climbing left turn to 7500 direct FABAN and hold.

D-ATIS 120.0 254.3	EL PASO APP CON 124.25 298.85	EL PASO TOWER 118.3 239.275	GND CON 121.9 348.6	CLNC DEL 125.0 379.1
-----------------------	----------------------------------	--------------------------------	------------------------	-------------------------



ELEV 3962

TDZE 3950

12020 X 150

5499 X 75

9025 X 150

261 268

222°

0.3% DOWN

0.5% UP

0.3% DOWN

TWR

MIRL Rwy 8L-26R
REIL Rws 4 and 8R
HIRL Rws 4-22 and 8R-26L

4400

7500

FABAN

VGSI and RNAV glidepath not coincident (VGSI Angle 3.00/TCH 70).

RW22

EMOLE 5100

GP 3.00° TCH 55

See planview for multiple IF locations.

3.4 NM

CATEGORY	A	B	C	D
RNP 0.10 DA	4200/24	250 (300-½)		
RNP 0.30 DA	4270/27	320 (400-⅝)		

AUTHORIZATION REQUIRED

SC-3, 07 AUG 2025 to 04 SEP 2025

SC-3, 07 AUG 2025 to 04 SEP 2025