

APP CRS
085°

Rwy Ldg
TDZE
3940

Apt Elev
3962

RNAV (RNP) X RWY 8R

EL PASO INTL (ELP)

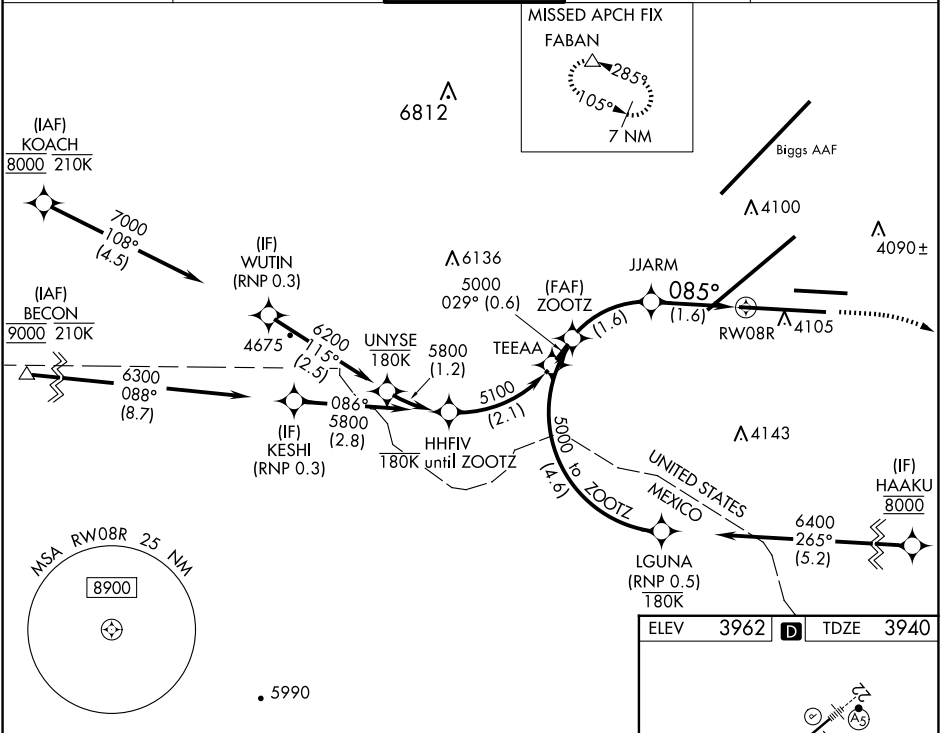
RNP AR APCH.
RF required.

ASR

For uncompensated Baro-VNAV systems, procedure NA below -5°C or above 54°C.

MISSED APPROACH: Climb to 4400 then climbing right turn to 7500 direct FABAN and hold.

| | | | | |
|------------------------------|---|---------------------------------------|-------------------------------|--------------------------------|
| D-ATIS 120.0 254.3 | EL PASO APP CON 124.25 298.85 | EL PASO TOWER 118.3 239.275 | GND CON 121.9 348.6 | CLNC DEL 125.0 379.1 |
|------------------------------|---|---------------------------------------|-------------------------------|--------------------------------|



VGSI and RNAV glidepath not coincident (VGSI Angle 3.00/TCH 75).

4400

7500

FABAN

ZOOTZ

5000

JJARM

4487

RW08R

GP 3.00°

TCH 50

See planview for multiple IF locations.

1.6 NM

1.6 NM

| CATEGORY | A | B | C | D |
|-------------|---|-----------------------------------|---|---|
| RNP 0.20 DA | | 4193- ³ / ₄ | 253 (300- ³ / ₄) | |
| RNP 0.30 DA | | 4234- ⁷ / ₈ | 294 (300- ⁷ / ₈) | |

AUTHORIZATION REQUIRED

MIRL Rwy 8L-26R
HIRL Rwy 4-22 and 8R-26L
REIL Rwy 4 and 8R