

LOC/DME I-ELP 111.5 Chan 52	APP CRS 222°	Rwy Ldg TDZE 3950 Apt Elev 3962	ILS or LOC RWY 22 EL PASO INTL (ELP)
---	------------------------	---	---

RADAR required when R-5103 in use.

⚠

Circling NA for Cat D and E north of Rwy 26R and northwest of Rwy 4.
For inop ALS, increase S-ILS 22 Cat E visibility to RVR 4000, S-LOC 22 ASR Cats C/D/E to RVR 5500.

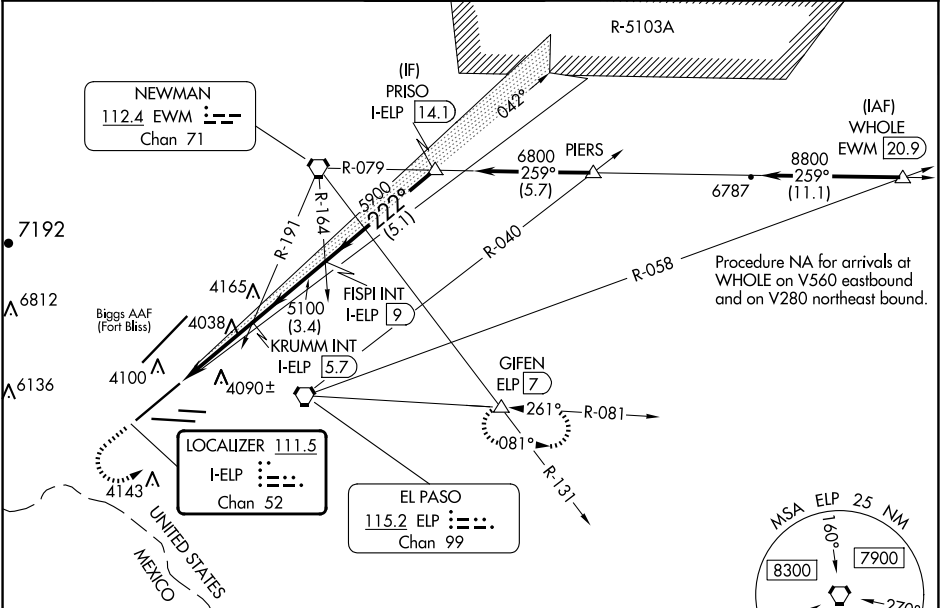
MALSR

⚠

⚠

MISSED APPROACH: Climb to 4600 then climbing left turn to 8000 on heading 050° and on ELP VORTAC R-081 to GIFEN INT/ELP 7 DME and hold, continue climb-in-hold to 8000.

D-ATIS 120.0 254.3	EL PASO APP CON 124.25 298.85	EL PASO TOWER 118.3 239.275	GND CON 121.9 348.6	CLNC DEL 125.0 379.1
------------------------------	---	---------------------------------------	-------------------------------	--------------------------------



ELEV 3962	D	TDZE 3950
-----------	----------	-----------

222°

1200 X 1.50

0.3% DOWN

5499 X 7.75

0.3% DOWN

9025 X 1.50

0.5% UP

0.3% DOWN

TWR

MIRL Rwy 8L-26R
REIL Rwys 4 and 8R
HIRL Rwys 4-22 and 8R-26L
FAF to MAP 3.4 NM

Knots	60	90	120	150	180
Min:Sec	3:24	2:16	1:42	1:22	1:08

4600	8000	ELP R-081	GIFEN	VGSI and ILS glidepath not coincident (VGSI Angle 3.00/TCH 70).	
Use I-ELP DME when on the localizer course.		KRUMM INT I-ELP 5.7	FISPI INT I-ELP 9	PRISO I-ELP 14.1	6800
I-ELP 3.1		5100	5900	5100	GS 3.00° TCH 55
I-ELP 2.2		0.9	2.6 NM	3.4 NM	5.1 NM
CATEGORY	A	B	C	D	E
S-ILS 22	4150/24 200 (200-½)				
S-LOC 22	4300/24	350 (400-½)	4300/30	350 (400-¾)	
CIRCLING	4420-1	4440-1	4480-1½	4680-2¼	4700-2½
	458 (500-1)	478 (500-1)	518 (600-1½)	718 (800-2¼)	738 (800-2½)