

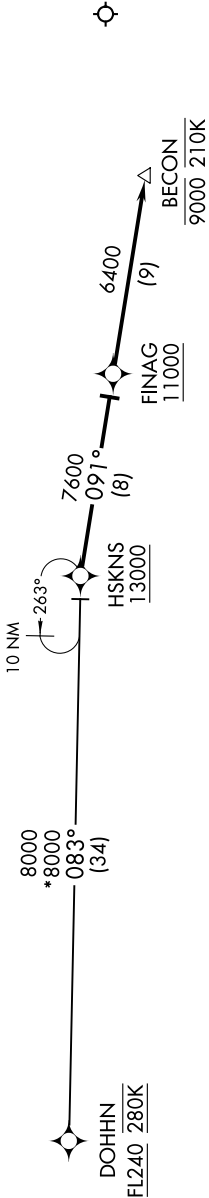
SC-3, 07 AUG 2025 to 04 SEP 2025

ARRIVAL ROUTE DESCRIPTION

DOHHN TRANSITION (DOHHN.HSKNS1)

LANDING RWY 4: From HSKNS on track 091° to FINAG, cross FINAG at or above 11000, then on track 091° to BECON, cross BECON at 9000 at 210K, expect RNAV (RNP) approach or RADAR vectors to final approach course.

EL PASO D-ATIS  
120.0 254.3  
EL PASO APP CON  
124.25 298.85  
ALBUQUERQUE CENTER  
135.875 292.15



NOTE: RADAR required.  
NOTE: RNAV 1.  
NOTE: DME/DME/IRU or GPS required.  
NOTE: Turbojet aircraft only.  
NOTE: For Non-RNP aircraft, expect RADAR vectors to final approach course.  
NOTE: Expect RNP approach clearance or RADAR vectors to final approach prior to BECON.

NOTE: Chart not to scale.

SC-3, 07 AUG 2025 to 04 SEP 2025