

BEAHR THREE ARRIVAL (RNAV)

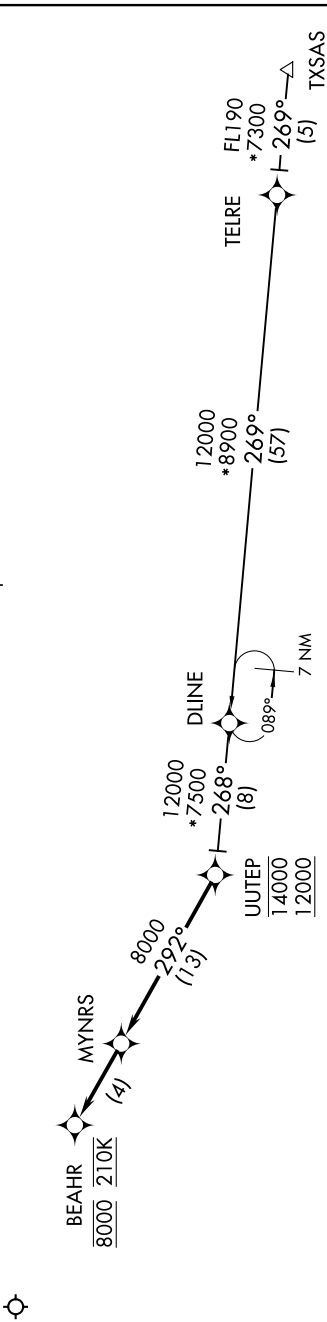
AL-134 (FAA)

EL PASO INTL (ELP)  
EL PASO, TEXAS

SC-3, 07 AUG 2025 to 04 SEP 2025

EL PASO D-ATIS  
120.0 254.3  
EL PASO APP CON  
124.25 298.85  
ALBUQUERQUE CENTER  
135.2 292.15

- NOTE: RADAR required.
- NOTE: RNAV 1.
- NOTE: DME/DME/IRU or GPS required.
- NOTE: Turbojet aircraft only.
- NOTE: Expect RNP approach or RADAR vectors to final approach course prior to BEAHR.



ARRIVAL ROUTE DESCRIPTION

TXSAS TRANSITION (TXSAS:BEAHR3)

From UUTEP on track 292° to MYNRS, then on track 292° to BEAHR, cross BEAHR at 8000 at 210K, expect RNAV (RNP) approach or RADAR vectors to final approach course.

NOTE: Chart not to scale.

BEAHR THREE ARRIVAL (RNAV)

(BEAHR.BEAHR3) 03APR14

EL PASO, TEXAS  
EL PASO INTL (ELP)

SC-3, 07 AUG 2025 to 04 SEP 2025