


EWM VORTAC 112.4 Chan 71	APCH CRS 210°	Rwy Idg 13,554 TDZE 3947 Arpt Elev 3947
--	-------------------------	--

[USA]

VOR or TACAN RWY 22

BIGGS AAF (KBIF)

✈ * Circling CAT DE not authorized W of Rwy 4-22.		SSALR 		MISSED APPROACH: Climbing left turn to 8000 direct EWM VORTAC and hold, continue climb-in-hold to 8000. (TACAN only aircraft continue on EWM R-079 to PIER'S INT/ EWM 9.8 DME and hold, continue climb-in-hold to 9000).							
ATIS 120.0 254.3		EL PASO APP CON S of V16 119.15 353.5 N of V16 124.25 298.85		TOWER 127.9 342.25		GND CON 121.6 251.125		EL PASO CLNC DEL 125.0 379.1		ASR	

Use El Paso Intl altimeter setting.

Inop table does not apply.

Arrivals expect RADAR vectors to final when restricted areas are active.

TACAN only equipped a/cft.

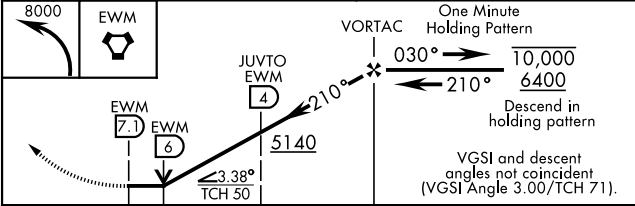
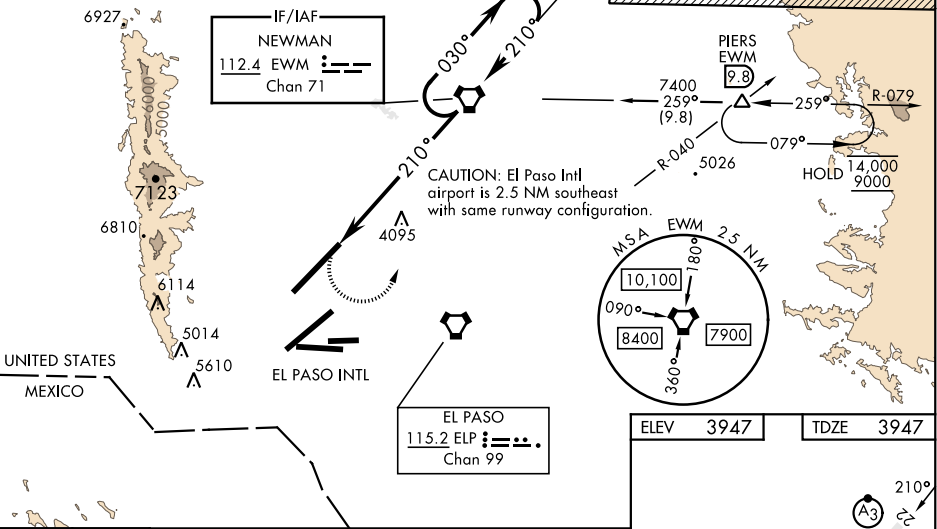
Final apch from holding pattern not authorized.

RADAR vectors required to final approach course.

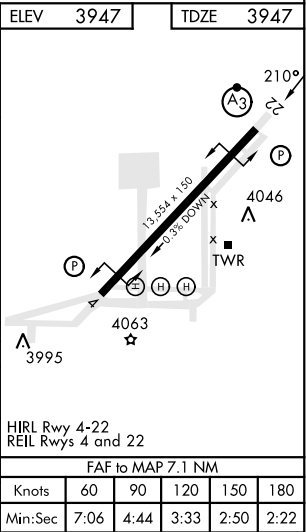
Procedure not authorized via V-560

eastbound without holding at PIER'S.

ATC clearance required.



CATEGORY	A	B	C	D	E
S-22	5140-1¼	1193 (1200-1¼)			5140-3 1193(1200-3)
C CIRCLING *	5140-1¼ 1193 (1200-1¼)	5140-1½ 1193 (1200-1½)	5140-3 1193	(1200-3)	
JUWTO FIX MINIMUMS					
S-22	4380-1 433	(500-1)	4380-1¼ 433	(500-1¼)	



VOR or TACAN RWY 22