




WAAS CH <b>99527</b> <b>W24A</b>	APP CRS <b>242°</b>	Rwy Ldg <b>7799</b> TDZE <b>955</b> Apt Elev <b>955</b>
--	------------------------	---

## RNAV (GPS) RWY 24

ELMIRA/CORNING RGNL (ELM)

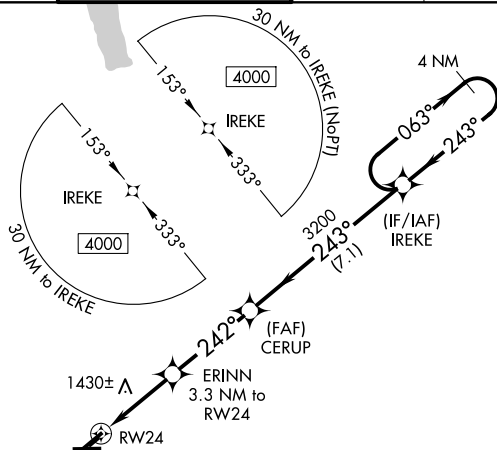
   -21°C	Circling Rwy 10 NA at night. Circling NA for Cat D south of Rwy 10-28. Circling NA to Rwy5 5 and 23. DME/DME RNP-0.3 NA. For uncompensated Baro-VNAV systems, LNAV/VNAV NA below -20°C (-4°F) or above 54°C (130°F). When local altimeter setting not received, use Penn VNAV altimeter setting and increase all DA 73 feet and all MDA 80, and increase LPV all Cats and LNAV Cats C/D visibility ¼ mile and LNAV/VNAV all Cats visibility 1½ mile; info table does not apply to LNAV/VNAV all Cats; for inop MALSR, increase LPV DA** all Cats visibility to ¾ and LPV all Cats visibility to 1½. Baro-VNAV and VDP NA when using Penn VNAV altimeter setting. For inop MALSR, increase LNAV Cats C/D visibility to 2½ mile. **Missed approach requires a minimum climb of 260 feet per NM to 2300. ** RVR 1800 authorized with use of FD or AP or HUD to DA, NA when using Penn VNAV altimeter setting.
---	--

MALSR  
A5

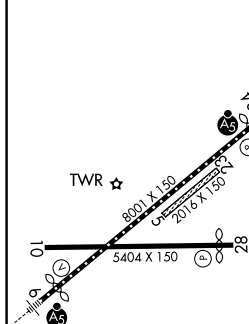
**MISSED APPROACH:**  
Climb to 4000 direct  
UNOLY and hold.

ATIS 125.475	ELMIRA APP CON ★ 128.425 257.8	ELMIRA TOWER ★ 121.1 (CTAF) 0 257.8	GND CON 121.9	CLNC DEL 121.9	UNICOM 122.95
-----------------	-----------------------------------	--	------------------	-------------------	------------------

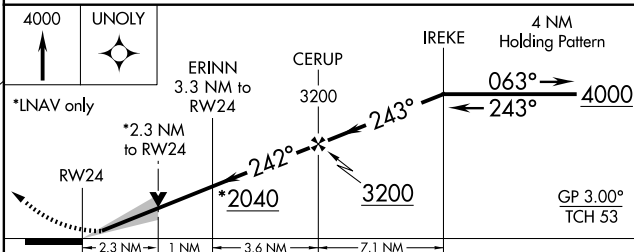
MISSED APCH FIX  
UNOLY ▲



ELEV 955	<b>D</b>	TDZE 955
----------	----------	----------



HIRL Rwy 6-24 **L**  
MIRL Rwy 10-28 **L**  
REIL Rwy 6 and 24



CATEGORY	A	B	C	D
LPV DA**		1155/24	200 (200-½)	
LPV DA		1348/45	393 (400-⅔)	
INAV/ VNAV DA		1807-2½	852 (900-2½)	
INAV MDA	1740/24 785 (800-½)	1740/40 785 (800-¾)	1740-1¾	785 (800-1¾)
CIRCLING	2100-1¼ 1145 (1200-1¼)	2100-1½ 1145 (1200-1½)	2120-3 1165 (1200-3)	2340-3 1385 (1400-3)

RNAV (GPS) RWY 24