

LOC I-ELM	APP CRS	Rwy Ldg	7799
109.1	242°	TDZE	955
		Apt Elev	955

ILS or LOC RWY 24

ELMIRA/CORNING RGNL (ELM)

RADAR required to define ERINN. RNAV 1-GPS required from MAP to UNOLY.

RNAV-1 GPS required for procedure entry. ADF or RADAR required.

**MAJLR**

**AS**

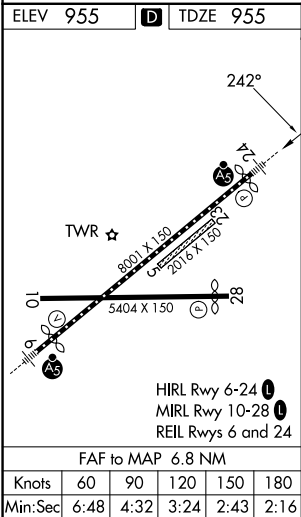
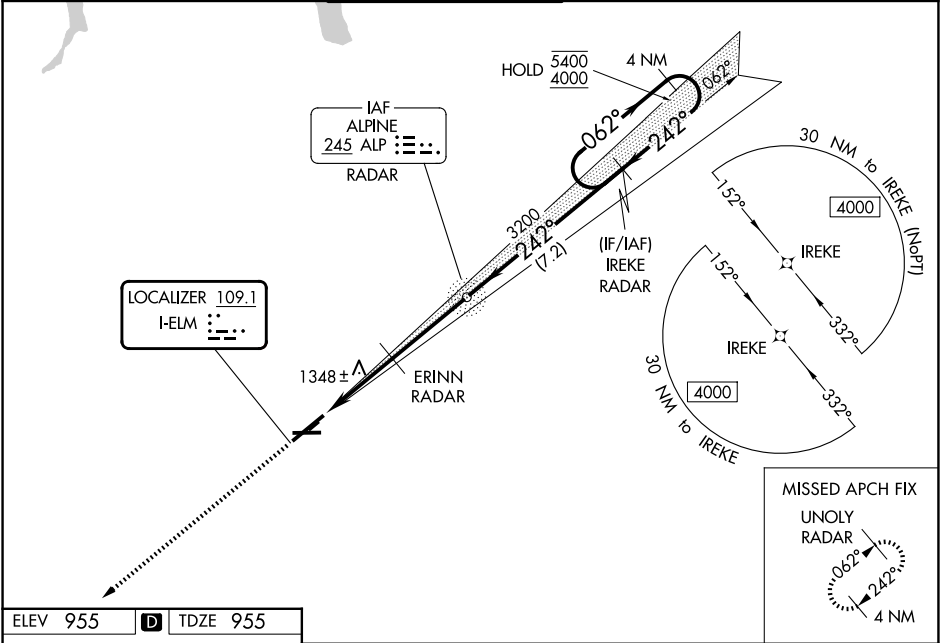
MISSED APPROACH:  
Climb to 4000 direct UNOLY/RADAR and hold.  
\*\* Missed approach requires minimum climb of 260 feet per NM to 2400.

**⚠** Circling NA for Cat D south of Rwy 10 and 28. Inop table does not apply to S-LOC 24 Cats C/D. Circling NA to Rwys 5 and 23. Circling Rwy 10 NA at night. For inop ALS increase S-ILS 24 all Cats visibility to RVR 6000.

**❄** -21°C

\*\* S-ILS 24 RVR 1800 authorized with use of FD or AP or HUD to DA.

ATIS	ELMIRA APP CON *	ELMIRA TOWER *	GND CON	CLNC DEL	UNICOM
125.475	128.425 257.8	121.1 (CTAF) 0 257.8	121.9	121.9	122.95



4000	UNOLY RADAR	ERINN RADAR	ALP NDB RADAR	IREKE RADAR	4 NM Holding Pattern
* LOC only.					
	3.3 NM	3.5 NM	7.2 NM		
CATEGORY	A	B	C	D	
S-ILS 24 **		1155/24	200 (200-½)		
S-ILS 24		1340/35	385 (400-¾)		
S-LOC 24	2060/40 1105 (1200-¾)	2060/55 1105 (1200-1)	2060-3	1105 (1200-3)	
CIRCLING	2060-1¼ 1105 (1200-1¼)	2080-1½ 1125 (1200-1½)	2100-3 1145 (1200-3)	2340-3 1385 (1400-3)	
	ERINN FIX MINIMUMS				
S-LOC 24	1600/24	645 (700-½)	1600-1⅜	645 (700-1⅜)	
CIRCLING	2020-1¼ 1065 (1100-1¼)	2080-1½ 1125 (1200-1½)	2100-3 1145 (1200-3)	2340-3 1385 (1400-3)	