

WAAS
CH **63207**
W31A

APP CRS
309°

Rwy Idg
TDZE **882**
Apt Elev **887**

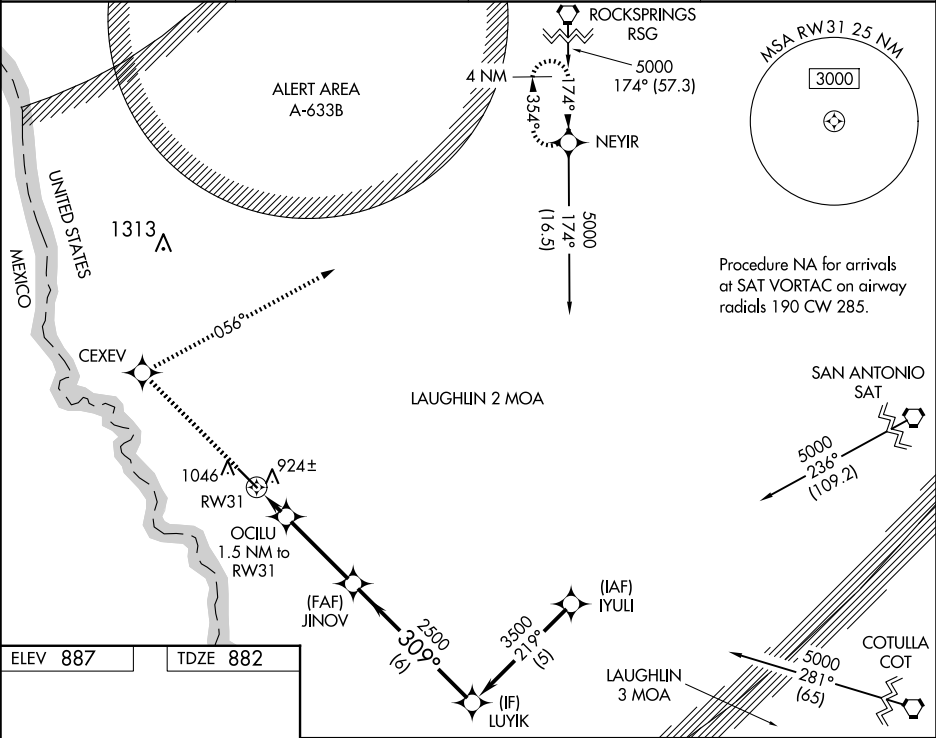
RNAV (GPS) RWY 31

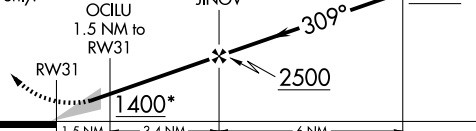
MAVERICK COUNTY MEML INTL (5T9)

Baro-VNAV NA. DME/DME RNP-0.3 NA. Use Laughlin AFB altimeter setting; when not received, use Del Rio Intl altimeter setting.

MISSED APPROACH: Climb to 4000 direct CEXEV and via 056° track to NEYIR and hold.

AWOS-3 119.175	KDLF ATIS★ 114.4 269.9	DEL RIO APP CON ★ 127.75 326.2	UNICOM 122.8 (CTAF) 0
--------------------------	----------------------------------	--	---------------------------------



4000	CEXEV	NEYIR	Procedure Turn NA	
↑	✧	tr 056°	✧	
*LNAV only.				
				
CATEGORY	A	B	C	D
LPV DA	1236-1¼ 354 (400-1¼)			NA
LNAV/ VNAV DA	1298-1½ 416 (500-1½)			NA
LNAV MDA	1280-1 398 (400-1)			NA
CIRCLING	1500-1 613 (700-1)		1500-1¾ 613 (700-1¾)	NA