

LOC I-DHN	APP CRS	Rwy Idg	8496
108.3	318°	TDZE	382
		Apt Elev	401

ILS or LOC RWY 32

DOTHAN RGNL (DHN)

▼

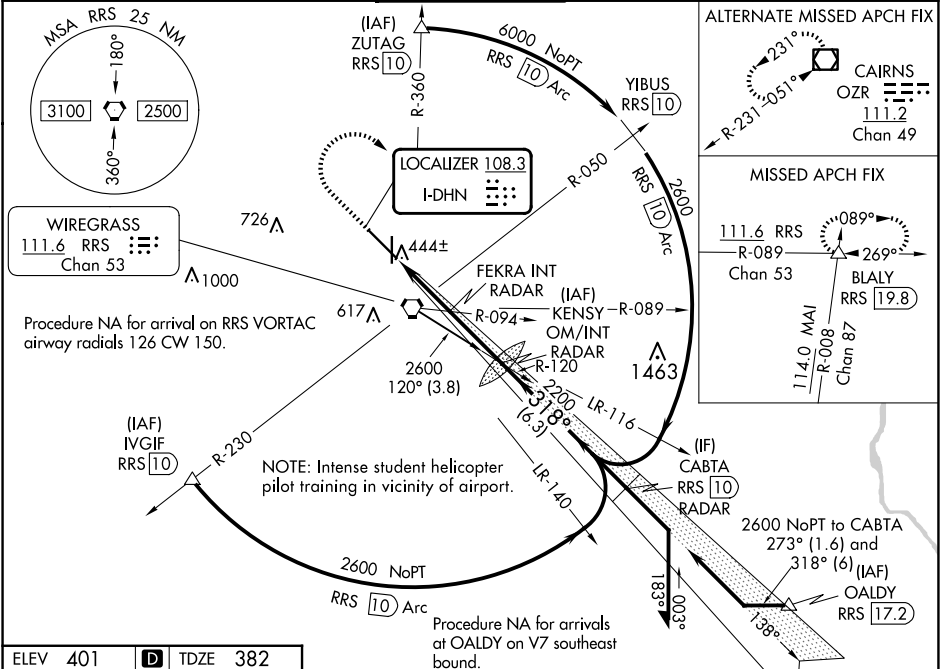
▲

For inop ALS, increase S-ILS 32 Cat E visibility to RVR 4000, S-LOC 32 Cat C/D/E visibility to 2½ SM, and S-LOC 32 FEKRA fix minimums Cat C/D/E visibility to RVR 5000.
** RVR 1800 authorized with use of FD or AP or HUD to DA.

MALSR

MISSED APPROACH: Climb to 1000 then climbing right turn to 3000 on hdg 130° and on RRS VORTAC R-089 to BLALY INT/RRS VORTAC 19.8 DME and hold.

ATIS	CAIRNS APP CON*	DOTHAN TOWER ★	GND CON	UNICOM
135.725	125.4 327.125	118.4 (CTAF) 0 257.6	121.7 348.6	122.95



1000

3000

hdg 130°

RRS R-089

BLALY

KENSY OM/INT RADAR

Remain within 15 NM

6000

2167

138°

2300

318°

2200

GS 3.00°

TCH 57

2.7 NM

2.6 NM

REIL Rwy 14 and 18

HIRL Rwy 18-36

HIRL Rwy 14-32

FAF to MAP 5.4 NM

Knots 60 90 120 150 180

Min:Sec 5:24 3:36 2:42 2:10 1:48

CATEGORY	A	B	C	D	E
S-ILS 32 **	582/24 200 (200-½)				
S-LOC 32	1220/24 838 (900-½)	1220/40 838 (900-¾)	1220-1½ 838 (900-1½)		
CIRCLING	1220-1¼ 819 (900-1¼)	1220-2½ 819 (900-2½)	1220-2¾ 819 (900-2¾)	1220-3 819 (900-3)	
FEKRA FIX MINIMUMS (DUAL VOR RECEIVERS OR RADAR REQUIRED)					
S-LOC 32	720/24 338 (400-½)	720/26 338 (400-½)			
CIRCLING	860-1 459 (500-1)	920-1½ 519 (600-1½)	1040-2 639 (700-2)	1040-2¼ 639 (700-2¼)	