

DILLON, MONTANA

AL-121 (FAA)

25107

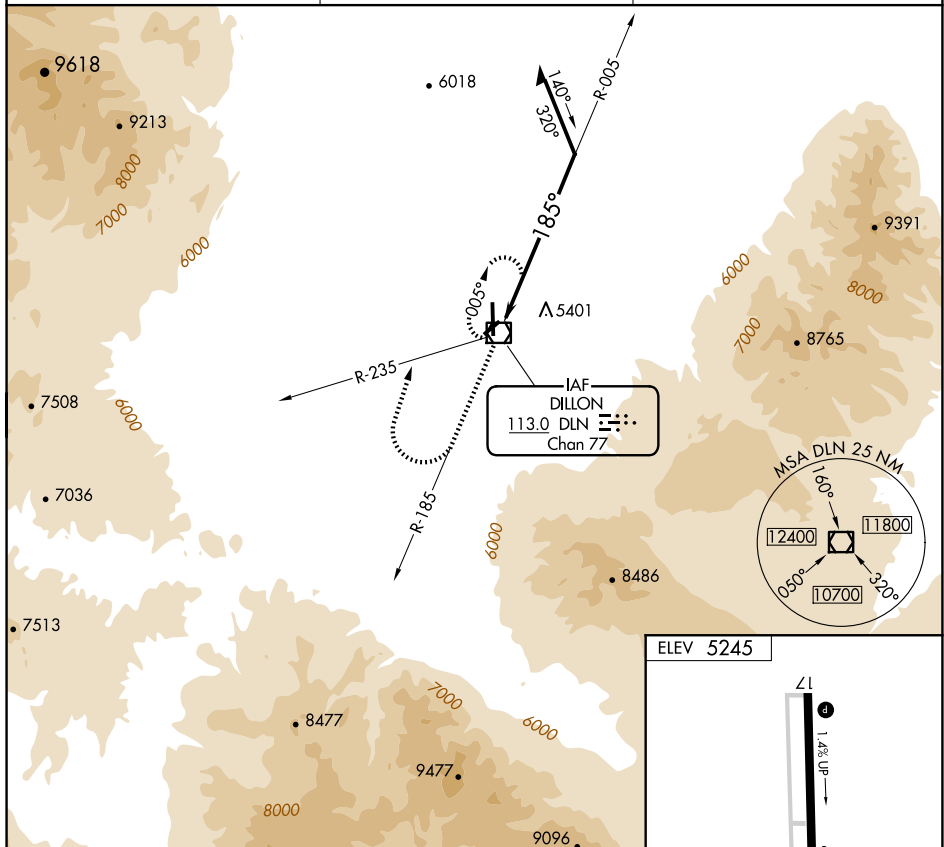
VOR/DME DLN <u>113.0</u> Chan 77	APP CRS 185°	Rwy Idg TDZE Apt Elev	N/A N/A 5245
--	------------------------	-----------------------------	---


VOR-A
DILLON (DLN)

T When local altimeter setting not received, procedure NA.
A Night Landing: Rwy 4, 22, 35 NA. Helicopter visibility reduction below 1 SM not authorized.

MISSED APPROACH: Climb to 9000 on DLN VOR/DME R-185 then climbing right turn to 9600 on heading 360° and DLN VOR/DME R-235 to DLN VOR/DME and hold.

ASOS 135.225	SALT LAKE CENTER 132.4 338.3	UNICOM 122.8 (CTAF) 0
------------------------	--	--



9000 ↑ DLN R-185	9600 ↗ hdg 360°	DLN R-235	DLN 
---------------------------	--------------------------	--------------	--


DLN
VOR/DME

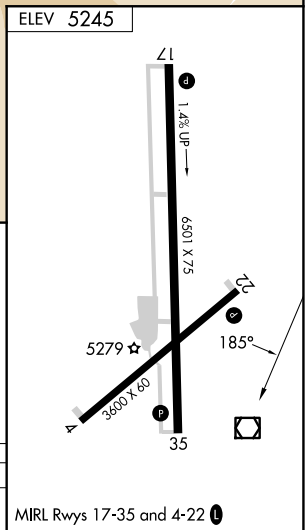
005°

185°

9600

Remain within 10 NM

CATEGORY	A	B	C	D
 CIRCLING	8100-1¼ 2855 (2900-1¼)	8100-1½ 2855 (2900-1½)	8100-3	2855 (2900-3)



DILLON, MONTANA
Amdt 8A 28APR16

45°15'N-112°33'W

DILLON (DLN)
VOR-A

NW-1, 07 AUG 2025 to 04 SEP 2025