

VORTAC DIK 112.9 Chan 76	APP CRS 183°	Rwy Idg N/A TDZE N/A Apt Elev 2592
--	------------------------	---

VOR-A

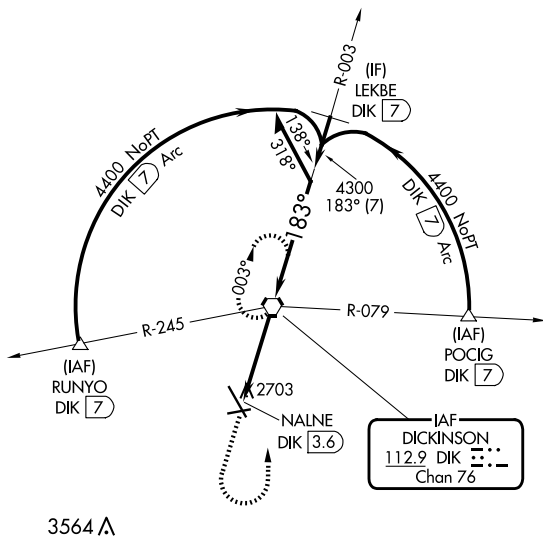
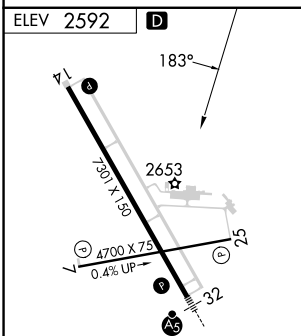
DICKINSON/THEODORE ROOSEVELT RGNL (DIK)

T When local altimeter setting not received, use Bowman
A altimeter setting and increase all MDAs 280 feet, increase
Circling Cat C visibility $\frac{3}{4}$ SM, Cat D visibility 1 SM.

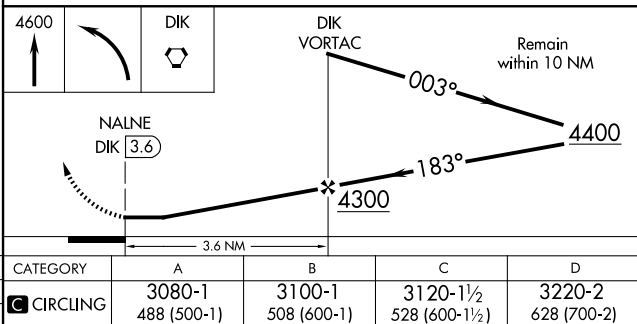
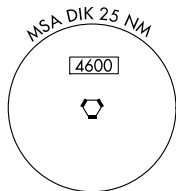
MISSED APPROACH: Climb to 4600 then turn left direct DIK VORTAC and hold.

ASOS
118,375

MINNEAPOLIS CENTER
124.25 236.825

UN|COM
123.0 (CTAF) **L**3564 Δ 

HIRL Rwy 14-32 **L**
MIRL Rwy 7-25 **L**
REIL Rwys 7, 14 and 25 **L**



DICKINSON, NORTH DAKOTA

Amdt 6A 23APR20

DICKINSON/THEODORE ROOSEVELT RGNL (DIK)

46°48'N-102°48'W

VOR-A