

WAAS
CH **99601**
W22A

APP CRS
216°

Rwy Ldg **12003**
TDZE **637**
Apt Elev **645**

RNAV (GPS) Z RWY 22L

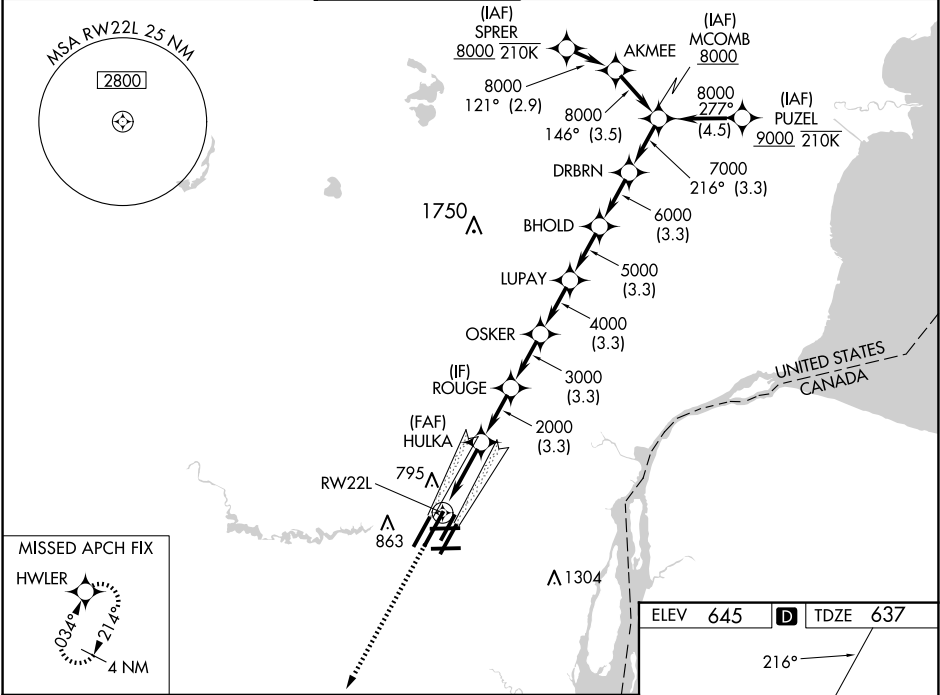
DETROIT METRO WAYNE COUNTY (DTW)

RNP APCH:
▼ For uncompensated Baro-VNAV systems, LNAV/VNAV NA below -10°C (14°F) or above 54°C (130°F). Simultaneous approach authorized. LNAV procedure NA during simultaneous operations. Use of FD or AP required during simultaneous operations. For inop ALS, increase LNAV/VNAV all Cats visibility to RVR 4500 and LNAV Cat C/D visibility to 1½ SM. #RVR 1800 authorized with use of FD or AP or HUD to DA.

MALSR

MISSED APPROACH:
Climb to 4000 direct HWLER and hold.

D-ATIS 133.675	DETROIT APP CON 124.05 284.0	METRO TOWER 128.125 317.725	GND CON 121.8 (NW) 119.45 (NE) 132.725 (SW) 119.25 (SE)	CLNC DEL 120.65	CPDLC
--------------------------	--	---------------------------------------	---	---------------------------	-------



4000 HWLER

***LNAV only.**
RW22L
HULKA
ROUGE
OSKER
LUPAY
BHOLD
DRBRN
MCOMB
GP 2.85°
TCH 60°

CATEGORY	A	B	C	D
LPV DA#	837/24 200 (200-½)			
LNAV/VNAV DA	938/24 301 (300-½)			
LNAV MDA	1100/24 463 (500-½)		1100/50 463 (500-¾)	
CIRCLING	1180-1 535 (600-1)		1180-1½ 535 (600-½) 1240-2 595 (600-2)	

TDZ/CL Rwys 3R, 4L, 4R and 22R
REIL Rwys 3L, 9L, 9R and 21R
HIRL all runways