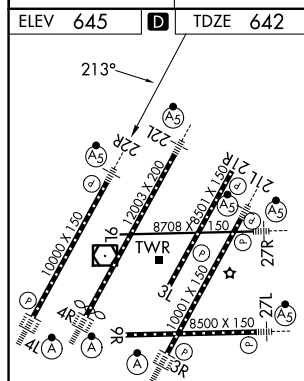
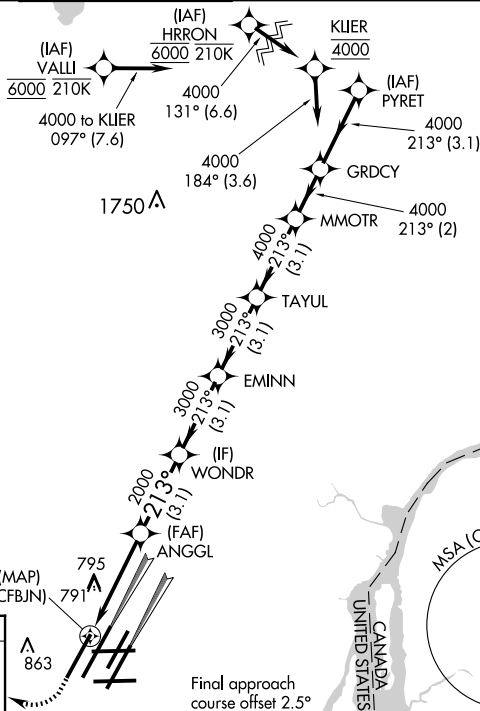


RNAV (GPS) Y RWY 22R
DETROIT METRO WAYNE COUNTY (DTW)

MISSED APPROACH: Climb to 1100 then climbing right turn to 4000 direct DOHNT and hold.

RADAR REQUIRED



1100 ↑	4000 ↗	DOHNT ✦	VGSi and RNAV glidepath not coincident (VGSi Angle 3.00/TCH 71).									
*LNAV only.			TAYUL MMOTR GRDCY									
			ANGGL WONDRE EMINN 2000 3000 3000 4000 4000 213° 4000 GP 3.00° TCH 55									
			1.1 NM 3.0 NM 3.1 NM 3.1 NM 3.1 NM 3.1 NM 2 NM									
CATEGORY	A		B			C			D			
LPV DA			892/24			250 (300-1/2)						
LNAV/VNAV DA			1050/45			408 (500-7/8)						
LNAV MDA	1060/24		418 (500-1/2)			1060/40			418 (500-3/4)			
C CIRCLING	1180-1		535 (600-1)			1180-1 1/2 535 (600-1 1/2)			1240-2 595 (600-2)			