

DETROIT, MICHIGAN

AL-119 (FAA)

RNAV (GPS) PRM Z RWY 4R  
(CLOSE PARALLEL)

DETROIT METRO WAYNE COUNTY (DTW)

WAAS CH <b>87139</b> <b>W04B</b>	APP CRS <b>036°</b>	Rwy Ldg <b>11494</b> TDZE <b>640</b> Apt Elev <b>645</b>
--	------------------------	--

RNP APCH.

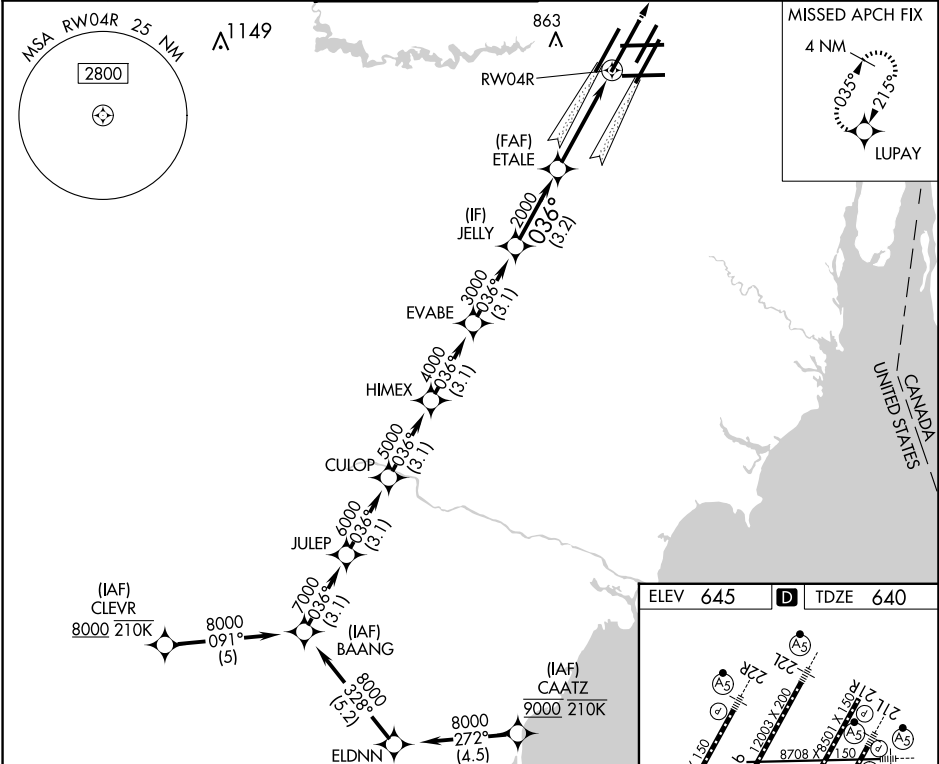
For uncompensated Baro-VNAV systems, LNAV/VNAV NA below -19°C or above 54°C . Simultaneous approach authorized. Use of FD or AP required during simultaneous operations. Dual VHF comm required. See additional requirements on AAUP.

ALSF-2

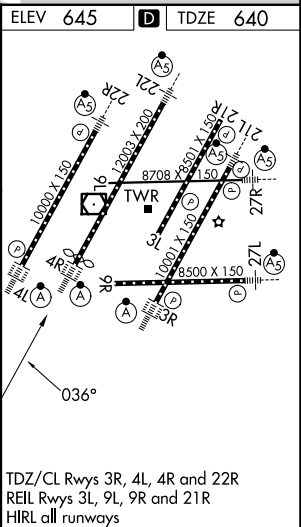


MISSED APPROACH:  
Climb to 4000 direct LUPAY and hold.

D-ATIS <b>133.675</b>	DETROIT APP CON <b>124.05 284.0</b>	METRO TOWER <b>128.125 317.725</b> <b>PRM 135.775</b>	GND CON <b>121.8 (NW) 119.45 (NE)</b> <b>132.725 (SW) 119.25 (SE)</b>	CLNC DEL <b>120.65</b>	CPDLC
--------------------------	--	---	---	---------------------------	-------



<p>GP 3.00° TCH 52</p>							BAANG		JULEP		CULOP		HIMEX		EVABE		JELLY		ETALE		RWY04R		LUPAY	
8000		7000		6000		5000		4000		3000		2000												
3.1 NM		3.1 NM		3.1 NM		3.1 NM		3.1 NM		3.2 NM		4.1 NM												
CATEGORY		A		B		C		D																
LPV DA				840/18		200 (200-½)																		
LNAV/VNAV DA				1021/35		381 (400-¾)																		



DETROIT, MICHIGAN  
Amdt 1A 28FEB19

42°13'N-83°21'W  
RNAV (GPS) PRM Z RWY 4R (CLOSE PARALLEL)

DETROIT METRO WAYNE COUNTY (DTW)

EC-1, 07 AUG 2025 to 04 SEP 2025

EC-1, 07 AUG 2025 to 04 SEP 2025