

D-ATIS  
133.675  
DETROIT APP CON  
124.975 284.0

NOTE: RADAR required.

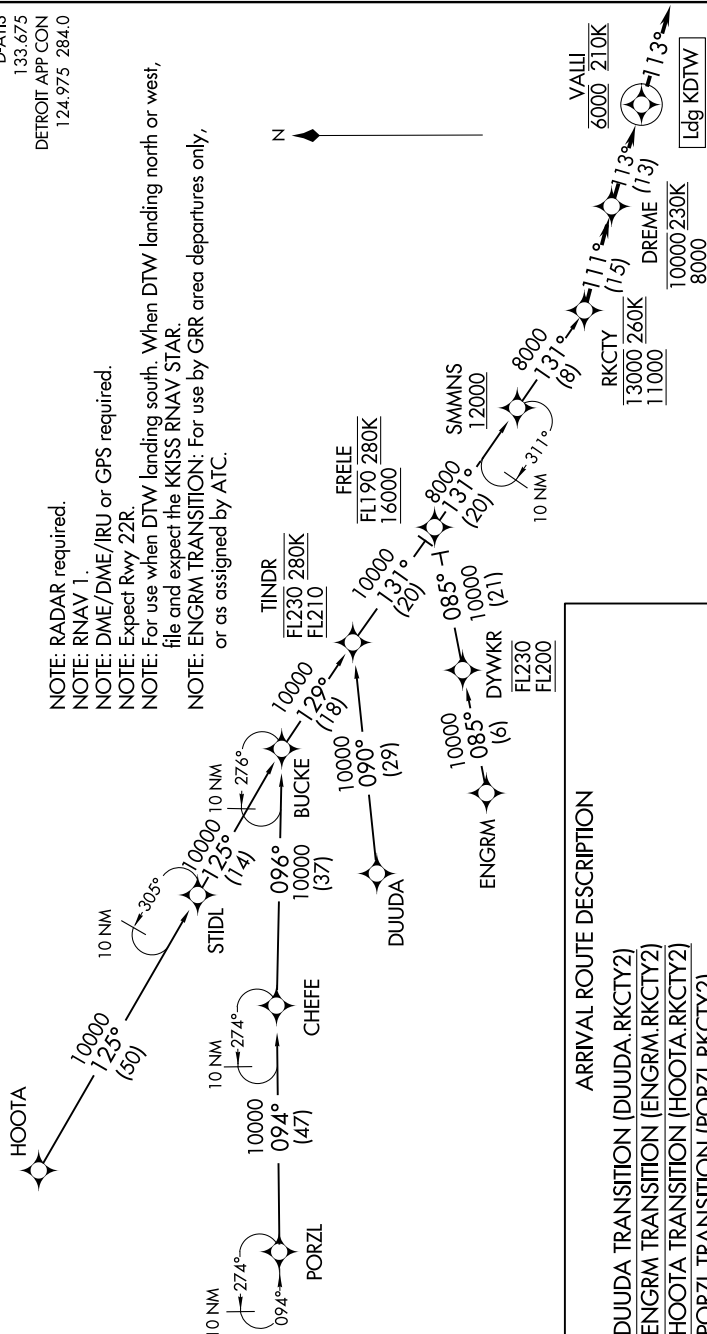
NOTE: RNAV 1.

NOTE: DME/DME/IRU or GPS required.

NOTE: Expect Rwy 22R.

NOTE: For use when DTW landing south. When DTW landing north or west, file and expect the KKISS RNAV STAR.

NOTE: ENGRM TRANSITION: For use by GRR area departures only,  
or as assigned by ATC.



NOTE: Chart not to scale.

RKCTY TWO ARRIVAL (RNAV)  
(RKCTY.RKCTY2) 10OCT19

10OCT19

DETROIT, MICHIGAN  
DETROIT METRO WAYNE COUNTY (DTW)

DETROIT, MICHIGAN

## ARRIVAL ROUTE DESCRIPTION

DUUDA TRANSITION (DUUDA.RKCTY2)

ENGRM TRANSITION (ENGRM.RKCTY2)

HOOA TRANSITION (HOOA.RKCTY2)

PORZL TRANSITION (PORZL.RKCTY2)

## LOST COMMUNICATIONS

From VALLI, execute RNAV (GPS) Y RWY 22R or ILS Y RWY 22R approach.

From RKCTY on track 111° to cross DREME between 8000 and 10000 and at 230K, then on track 113° to cross VALLI at 6000 and at 210K, then on track 113°. Expect RADAR vectors to final approach course.