

WAAS CH 86220 W27A	APP CRS 276°	Rwy Ldg TDZE 635 Apt Elev 645
--	------------------------	---

RNAV (GPS) RWY 27R

DETROIT METRO WAYNE COUNTY (DTW)

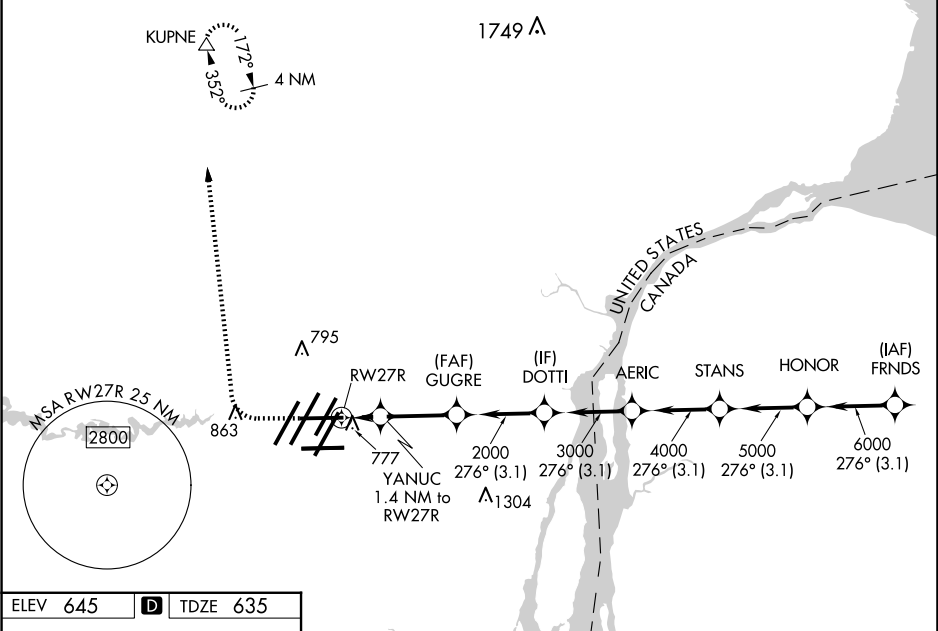
RNP APCH

▼ For uncompensated Baro-VNAV systems, LNAV/VNAV NA below -20°C (-4°F) or above 54°C (130°F). For inop ALS, increase LNAV Cat C and D visibility to RVR 6000. Simultaneous approach authorized. LNAV procedure NA during simultaneous operations. Use of FD or AP required during simultaneous operations.
** RVR 1800 authorized with use of FD or AP or HUD to DA.

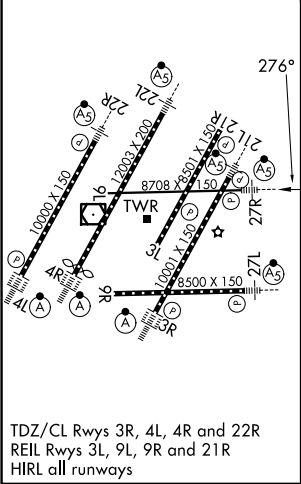
MALSR




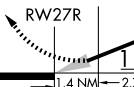

MISSED APPROACH: Climb to 1100 then climbing right turn to 4000 direct KUPNE and hold, continue climb-in-hold to 4000.

D-ATIS 133.675	DETROIT APP CON 125.15 284.0	METRO TOWER 118.4 317.725	GND CON 121.8 (NW) 119.45 (NE) 132.725 (SW) 119.25 (SE)	CLNC DEL 120.65	CPDLC
--------------------------	--	-------------------------------------	---	---------------------------	-------



ELEV 645	D	TDZE 635
-----------------	----------	-----------------



1100	4000	KUPNE	VGSi and RNAV glidepath not coincident (VGSi Angle 3.00/TCH 61).						
									
*LNAV only.			GUGRE	DOTTI	AERIC	STANS	HONOR	FRNDS	7000
YANUC 1.4 NM to RW27R			2000	3000	4000	5000	6000	276°	
			1120*	2000					
1.4 NM			2.7 NM	3.1	3.1	3.1	3.1	3.1 NM	
CATEGORY	A		B		C		D		
LPV DA**	835/24				200 (200-½)				
LNAV/ VNAV DA	938/24				303 (300-½)				
LNAV MDA	1040/24		405 (400-½)		1040/40		405 (400-¾)		
 CIRCLING	1180-1		535 (600-1)		1180-1½ 535 (600-1½)		1240-2 595 (600-2)		
GP 3.00° TCH 50									