

DETROIT, MICHIGAN

ILS PRM Z RWY 4L (CAT II & III)  
(CLOSE PARALLEL)

DETROIT METRO WAYNE COUNTY (DTW)

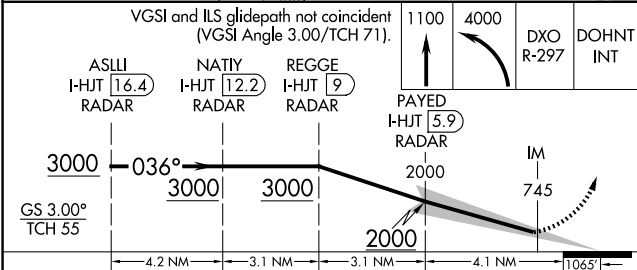
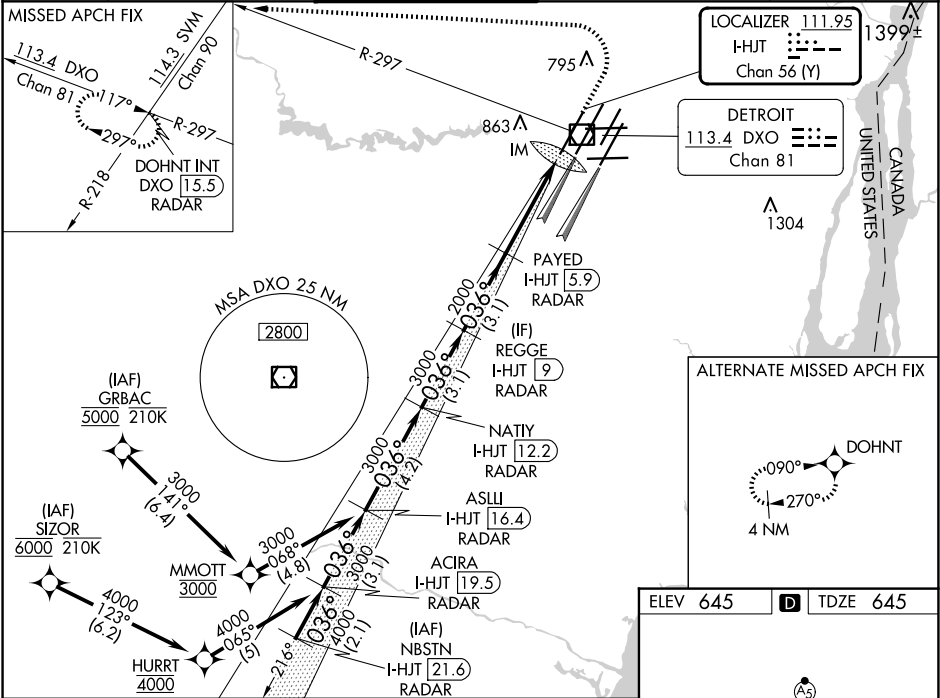
LOC/DME I-HJT	APP CRS	Rwy Ldg	10000
111.95	036°	TDZE	645
Chan 56 (Y)		Apt Elev	645

From GRBAC, SIZOR: RNAV 1-DME/DME/IRU or GPS required. Aircraft not DME/DME/IRU or GPS equipped - RADAR required for procedure entry. DME or RADAR required.

Cat II: RVR 1000 authorized with specific OPSPEC, MSPEC, or LOA approval and use of autoland or HUD to touchdown. Simultaneous approach authorized. Use of FD or AP required during simultaneous operations. Dual VHF Comm required. See additional requirements on AAUP.

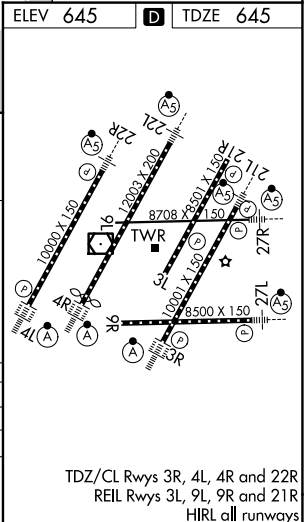
MISSLED APPROACH: Climb to 1100 then climbing left turn to 4000 on DXO VOR/DME R-297 to DOHNT INT/DXO 15.5 DME/RADAR and hold.

D-ATIS	DETROIT APP CON	METRO TOWER	GND CON	CLNC DEL	CPDLC
133.675	124.05 284.0	135.0 317.725 PRM 127.05	121.8 (NW) 119.45 (NE) 132.725 (SW) 119.25 (SE)	120.65	



CATEGORY	A	B	C	D
S-ILS 4L	CAT II	RA 101/12	100 DA 745	
S-ILS 4L		CAT III	RVR 06	

CATEGORY II & III ILS - SPECIAL AIRCREW  
& AIRCRAFT CERTIFICATION REQUIRED



DETROIT, MICHIGAN  
Orig-B 30JAN20

42°13'N-83°21'W

DETROIT METRO WAYNE COUNTY (DTW)

ILS PRM Z RWY 4L (CAT II & III) (CLOSE PARALLEL)