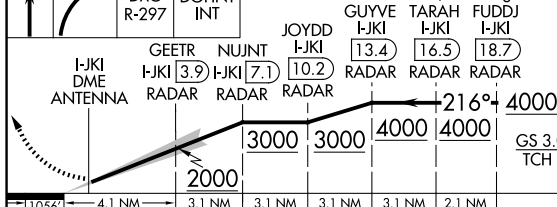
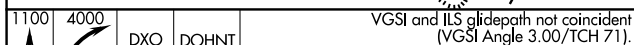
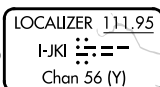
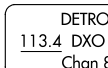
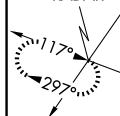
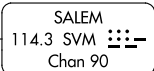
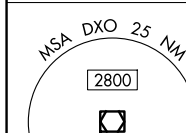
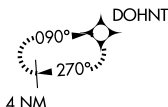


25163

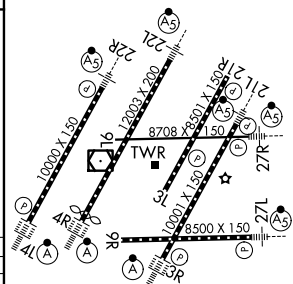
**MISSED APPROACH:** Climb to 1100 then climbing right turn to 4000 on DXO VOR/DME R-297 to DOHNT INT/DXO 15.5 DME/RADAR and hold.

ALTERNATE MISSED APCH FIX

CATEGORY	A	B	C	D
S-ILS 22R	SA CAT I	RA 148/14	150 DA 792	
S-ILS 22R	SA CAT II	RA 98/12	100 DA 742	

SA CATEGORY I & II ILS - SPECIAL AIRCREW  
& AIRCRAFT CERTIFICATION REQUIRED

ELEV	645	<b>D</b>	TDZE	642
------	-----	----------	------	-----



TDZ/CL Rwy's 3R, 4L, 4R and 22R  
REIL Rwy's 3L, 9L, 9R and 21R  
HIRL all Rwy's

DETROIT METRO WAYNE COUNTY (DTW)

ILS PRM Z RWY 22R (SA CAT I & II) (CLOSE PARALLEL)

EC-1, 07 AUG 2025 to 04 SEP 2025