

ILS PRM Z RWY 22R (CLOSE PARALLEL)
DETROIT METRO WAYNE COUNTY (DTW)

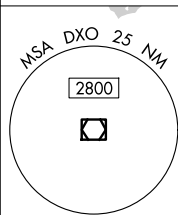
Aircraft not DME/DME/IRU or GPS equipped - RADAR required for procedure entry.


*RVR 1800 authorized with use of FD or AP or HUD to DA.

MALSR

MISSED APPROACH: Climb to 1100 then climbing right turn to 4000 on DXO VOR/DME R-297 to DOHNT INT/DXO 15.5 DME/RADAR and hold.


D-ATIS 133.675	DETROIT APP CON 124.05 284.0	METRO TOWER 135.0 317.725 PRM 127.05	GND CON 121.8 (NW) 119.45 (NE) 132.725 (SW) 119.25 (SE)	CLNC DEL 120.65	CPDLC
--------------------------	--	--	---	---------------------------	-------



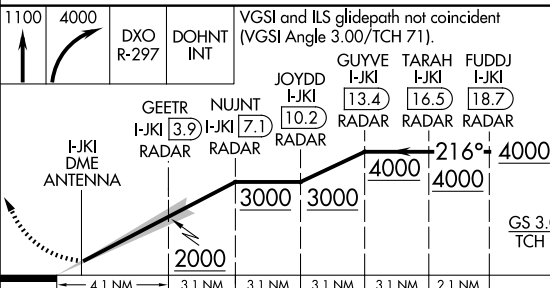
SALEM
3 SVM 
Chan 90

DOHNT INT
DXO 15.5
RADAR R-218

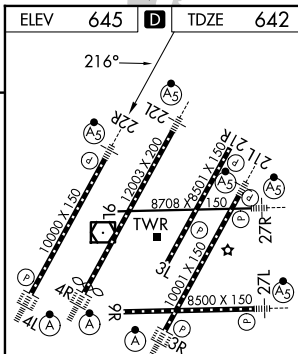
A diagram showing two intersecting lines. One line is horizontal, and the other is slanted. At the intersection point, two angles are marked with dashed arcs. The upper-left angle is labeled 117° and the lower-left angle is labeled 297° .

DETROIT
113.4 DXO 
Chan 81

LOCALIZER 111.95
I-JKI $\begin{smallmatrix} \cdot & \cdot & \cdot \\ \cdot & \cdot & \cdot \\ \cdot & \cdot & \cdot \end{smallmatrix} = -$
Chan 56 (Y)



CATEGORY	A	B	C	D
S-ILS 22R*	842/24 200 (200-½)			



TDZ/CL Rwy 3R, 4L, 4R and 22R
REIL Rwy 3L, 9L, 9R and 21R
HIRL all Rwy