

DETROIT, MICHIGAN

AL-119 (FAA)

25163

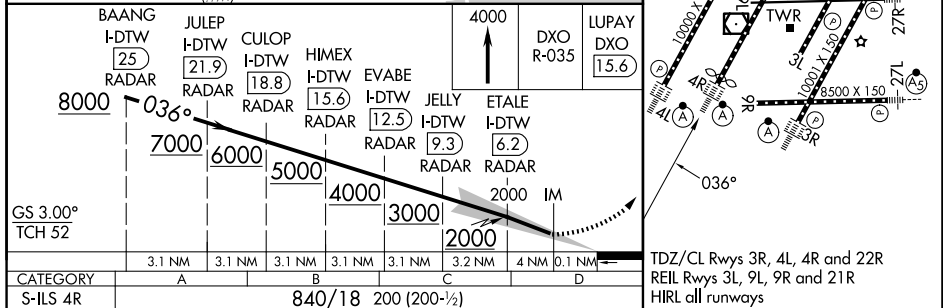
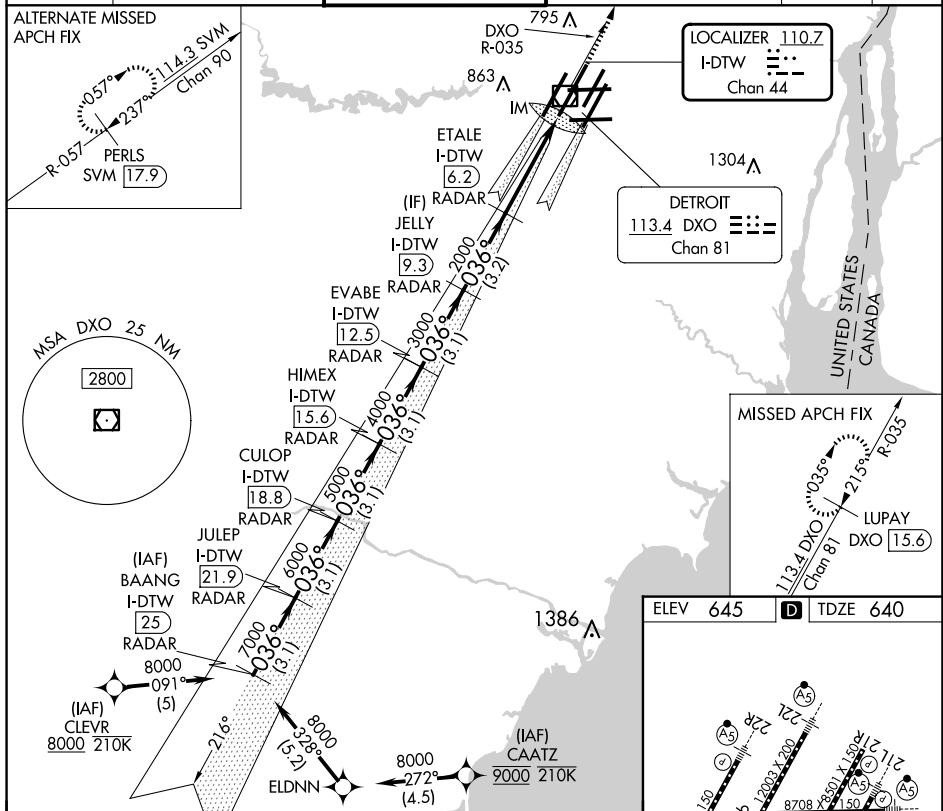
LOC/DME I-DTW 110.7 Chan 44	APP CRS 036°	Rwy Ldg TDZE Apt Elev	11494 640 645
---	------------------------	-----------------------------	--

ILS PRM RWY 4R (CLOSE PARALLEL)

DETROIT METRO WAYNE COUNTY (DTW)

RNAV 1-GPS. DME or RADAR required. CLEVR, CAATZ and ELDNN: RNAV 1-DME/DME/IRU or GPS required. Aircraft not DME/DME/IRU or GPS equipped- RADAR required for procedure entry.	ALS-2 	MISSED APPROACH: Climb to 4000 on DXO VOR/DME R-035 to LUPAY/DXO VOR/DME 15.6 DME and hold.
▼ Simultaneous approach authorized. Use of FD or AP required during simultaneous operations. Dual VHF Comm required. See additional requirements on AAUP. Procedure NA when glideslope not available.		

D-ATIS 133.675	DETROIT APP CON 124.05 284.0	METRO TOWER 128.125 317.725 PRM 135.775	GND CON 121.8 (NW) 119.45 (NE) 132.725 (SW) 119.25 (SE)	CLNC DEL 120.65	CPDLC
--------------------------	--	---	---	---------------------------	-------



DETROIT, MICHIGAN
Amdt 3A 13SEP18

42°13'N-83°21'W

DETROIT METRO WAYNE COUNTY (DTW)

ILS PRM RWY 4R (CLOSE PARALLEL)

EC-1, 07 AUG 2025 to 04 SEP 2025