

DETROIT, MICHIGAN

AL-119 (FAA)

25163

|   |                        |   |
|---|------------------------|---|
| LOC/DME I-DWC<br><b>110.7</b><br>Chan <b>44</b> | APP CRS<br><b>216°</b> | Rwy Ldg<br>TDZE <b>637</b><br>Apt Elev <b>645</b> |
|---|------------------------|---|

# ILS PRM RWY 22L (CLOSE PARALLEL)

DETROIT METRO WAYNE COUNTY (DTW)

RNAV 1-GPS.

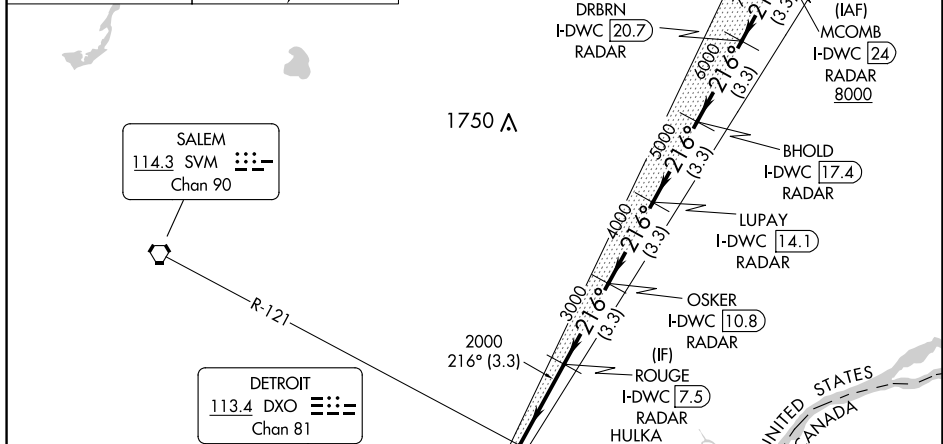
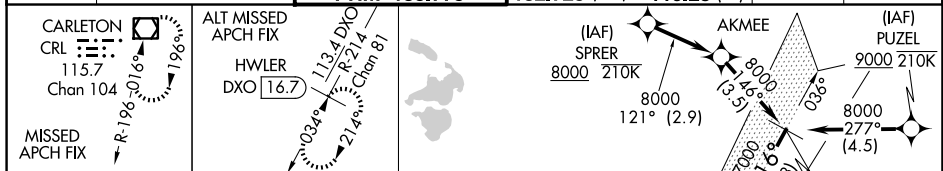
RNAV 1-DME/DME/IRU or RADAR required for procedure entry. DME or RADAR required.

Simultaneous approach authorized. Use of FD or AP required during simultaneous operations. Dual VHF comm required. See additional requirements on AAUP.  
Procedure NA when glide slope not available.  
\*RVR 1800 authorized with use of FD or AP or HUD to DA.

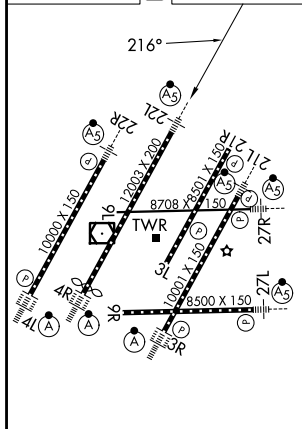


MISSED APPROACH:  
Climb to 4000 on heading 216° and CRL VOR/DME R-025 to CRL VOR/DME and hold, continue climb-in-hold to 4000.

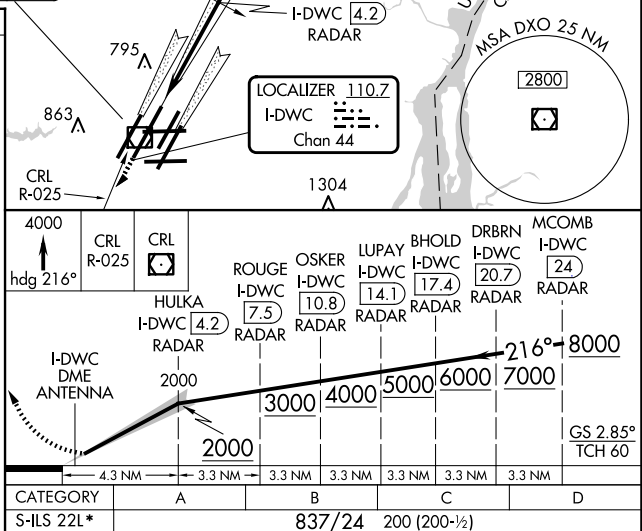
|                          |  |   |   |  |                           |       |
|--------------------------|--|---|---|--|---------------------------|-------|
| D-ATIS<br><b>133.675</b> | DETROIT APP CON<br><b>124.05 284.0</b> | METRO TOWER<br><b>128.125 317.725</b><br><b>PRM 135.775</b> | GND CON<br><b>121.8</b> (NW)<br><b>132.725</b> (SW) | <b>119.45</b> (NE)<br><b>119.25</b> (SE) | CLNC DEL<br><b>120.65</b> | CPDLC |
|--------------------------|--|---|---|--|---------------------------|-------|



|          |          |
|----------|----------|
| ELEV 645 | TDZE 637 |
|----------|----------|



TDZ/CL Rwy 3R, 4L, 4R and 22R  
REIL Rwy 3L, 9L, 9R and 21R  
HIRL all runways

DETROIT, MICHIGAN  
Amdt 2 24MAY18

42°13'N-83°21'W

DETROIT METRO WAYNE COUNTY (DTW)

# ILS PRM RWY 22L (CLOSE PARALLEL)

EC-1, 07 AUG 2025 to 04 SEP 2025