

LOC/DME I-EJR 111.5 Chan 52	APP CRS 216°	Rwy Ldg TDZE 632 Apt Elev 645
---	------------------------	---

ILS or LOC RWY 21L
DETROIT METRO WAYNE COUNTY (DTW)

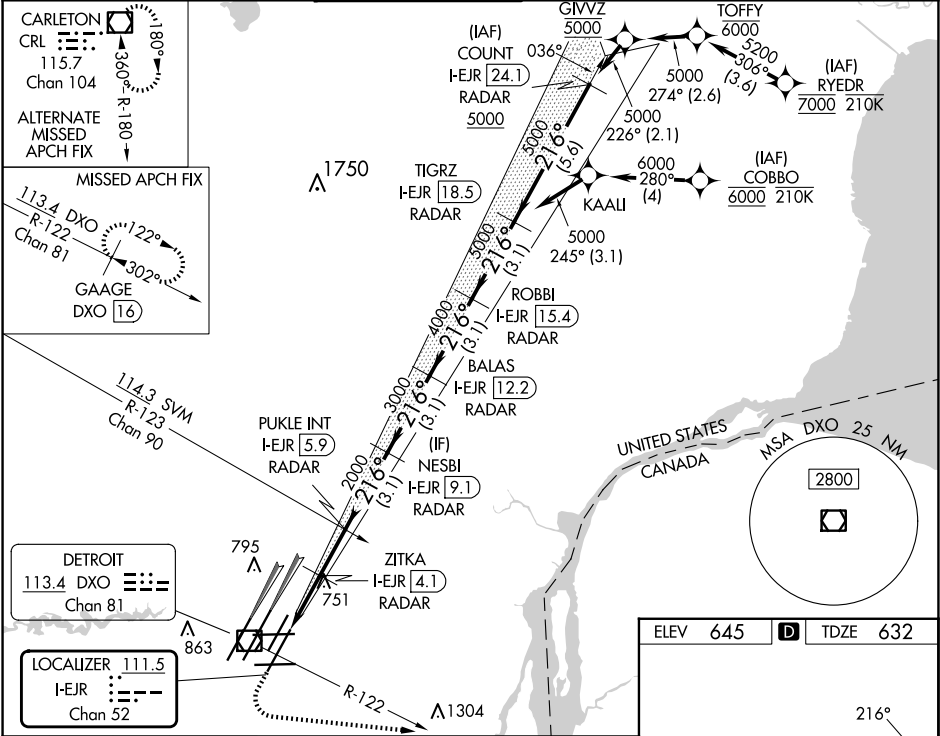
From RYEDR, COBBO: RNAV 1-DME/DME/IRU or GPS required. Aircraft not DME/DME/IRU or GPS equipped - RADAR required for procedure entry. DME or RADAR required.



MISSED APPROACH: Climb to 1100 then climbing left turn to 4000 on DXO R-122 to GAAGE/DXO 16 DME and hold, continue climb-in-hold to 4000.

Simultaneous approach authorized.
**RVR 1800 authorized with use of FD or AP or HUD to DA.

D-ATIS 133.675	DETROIT APP CON 125.15 284.0	METRO TOWER 118.4 317.725	GND CON 121.8 (NW) 119.45 (NE) 132.725 (SW) 119.25 (SE)	CLNC DEL 120.65	CPDLC
--------------------------	--	-------------------------------------	---	---------------------------	-------



1100 4000 DXO R-122	GAAGE DXO 16	VGSI and ILS glidepath not coincident (VGSI Angle 3.00/TCH 80).			
*LOC only	ZITKA I-EJR 4.1 RADAR	PUKLE INT I-EJR 5.9 RADAR	NESBI I-EJR 9.1 RADAR	BALAS I-EJR 12.2 RADAR	TIGRZ I-EJR 18.5 RADAR
I-EJR 1.8	I-EJR 2.8	I-EJR 4.1	I-EJR 5.9	I-EJR 9.1	I-EJR 12.2
1 NM	1.3 NM	1.8 NM	3.1 NM	3.1 NM	3.1 NM
CATEGORY	A	B	C	D	
S-ILS 21L **	832/24 200 (200-½)				
S-LOC 21L	1020/24	388 (400-½)	1020/35	388 (400-½)	
CIRCLING	1180-1	535 (600-1)	1180-½ 535 (600-½)	1240-2 595 (600-2)	

