


LOC/DME I-EPA 110.15 Chan 38(Y)	APP CRS 276°	Rwy Ldg TDZE Apt Elev 8500 630 645
---	------------------------	--

ILS RWY 27L (SA CAT I & II)
DETROIT METRO WAYNE COUNTY (DTW)

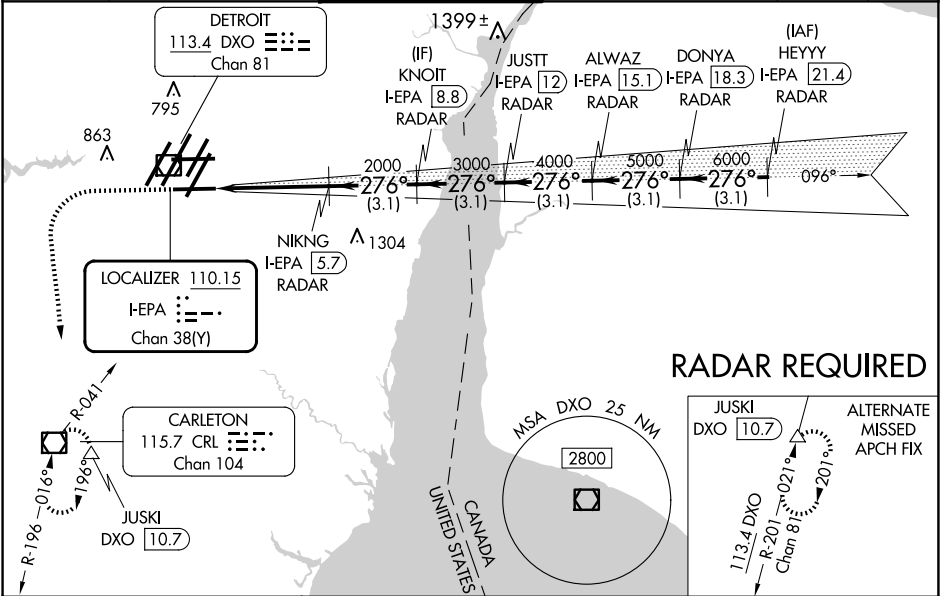
▼ DME or RADAR required. Simultaneous approach authorized.
SA Cat I: Requires specific OPSPEC, MSPEC, or LOA approval and use of HUD to DH.
SA Cat II: Reduced lighting: Requires specific OPSPEC, MSPEC, or LOA approval and use of Autoland or HUD to touchdown.

MALSR

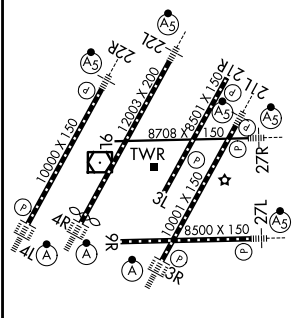


MISSED APPROACH: Climb to 1100 then climbing left turn to 4000 on heading 180° and CRL VOR/DME R-041 to CRL VOR/DME and hold, continue climb-in-hold to 4000.

D-ATIS 133.675	DETROIT APP CON 124.05 284.0	METRO TOWER 128.75 317.725	GND CON 121.8 (NW) 119.45 (NE) 132.725 (SW) 119.25 (SE)	CLNC DEL 120.65	CPDLC
--------------------------	--	--------------------------------------	---	---------------------------	-------



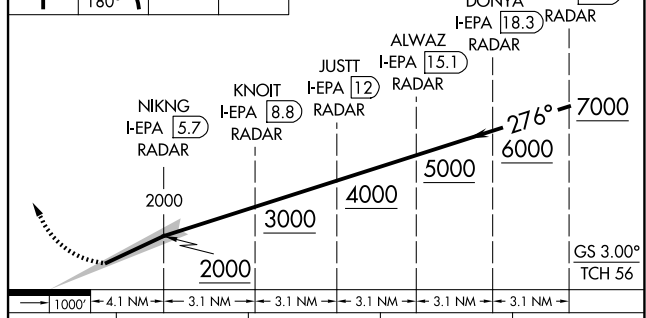
ELEV 645 TDZE 630



TDZ/CL Rwy 3R, 4L, 4R and 22R
REIL Rwy 3L, 9L, 9R and 21R
HRL all runways

1100 4000 CRL R-041

VGSI and ILS glidepath not coincident (VGSI Angle 3.00/TCH 71).



HEYYY 21.4, DONYA 18.3, ALWAZ 15.1, JUSTT 12, KNOIT 8.8, NIKNG 5.7

GS 3.00° TCH 56

CATEGORY	A	B	C	D
S-ILS 27L	SA CAT I	RA 146/16	150 DA 780	
S-ILS 27L	SA CAT II	RA 96/16	100 DA 730	

SA CATEGORY I & II ILS SPECIAL AIRCREW & AIRCRAFT CERTIFICATION REQUIRED