

LOC/DME I-DWC 110.7 Chan 44	APP CRS 216°	Rwy Ldg 12003 TDZE 637 Apt Elev 645
---	------------------------	--

ILS RWY 22L (SA CAT I)
DETROIT METRO WAYNE COUNTY (DTW)

DME or RADAR required. RNAV 1-DME/DME/IRU or RADAR required for procedure entry.

T Simultaneous approach authorized.

Requires specific OPSPEC, MSPEC, or LOA approval and use of HUD to DH.

MALSR

MISSED APPROACH: Climb to 4000 on heading 216° and CRL VOR/DME R-025 to CRL VOR/DME and hold, continue climb-in-hold to 4000.

D-ATIS	DETROIT APP CON	METRO TOWER	GND CON		CLNC DEL	CPDLC
133.675	124.05 284.0	128.125 317.725	121.8 (NW)	119.45 (NE)	120.65	
			132.725 (SW)	119.25 (SE)		

MISSED APCH FIX

CARLETON
CRL 115.7
Chan 104

ALTERNATE
MISSED APCH
FIX

HWLER
OXO 16.
RADAR

10		
----	--	--

121.8
132.725

GND CO	
(NW)	1
(SW)	1

CLNC DE
120.65

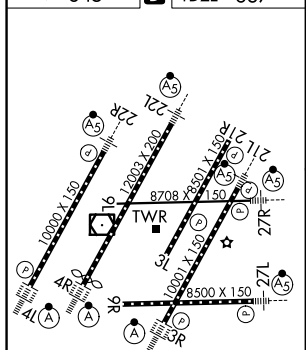
CPDLC

 Δ^{1750}

SALEM
3 SVM ::
Chan 90

DETROIT
4 DXO ≡ ::
Chan 81

ELEV 645	D	TDZE 637
----------	----------	----------



TDZ/CL Rwy's 3R, 4L, 4R and 22R
REIL Rwy's 3L, 9L, 9R and 21R
HIRL all runways

CATEGORY	A	B	C	D
S-ILS 22L	SA CAT I	RA 148/14	150 DA 787	

**SA CATEGORY I ILS- SPECIAL AIRCREW
& AIRCRAFT CERTIFICATION REQUIRED**