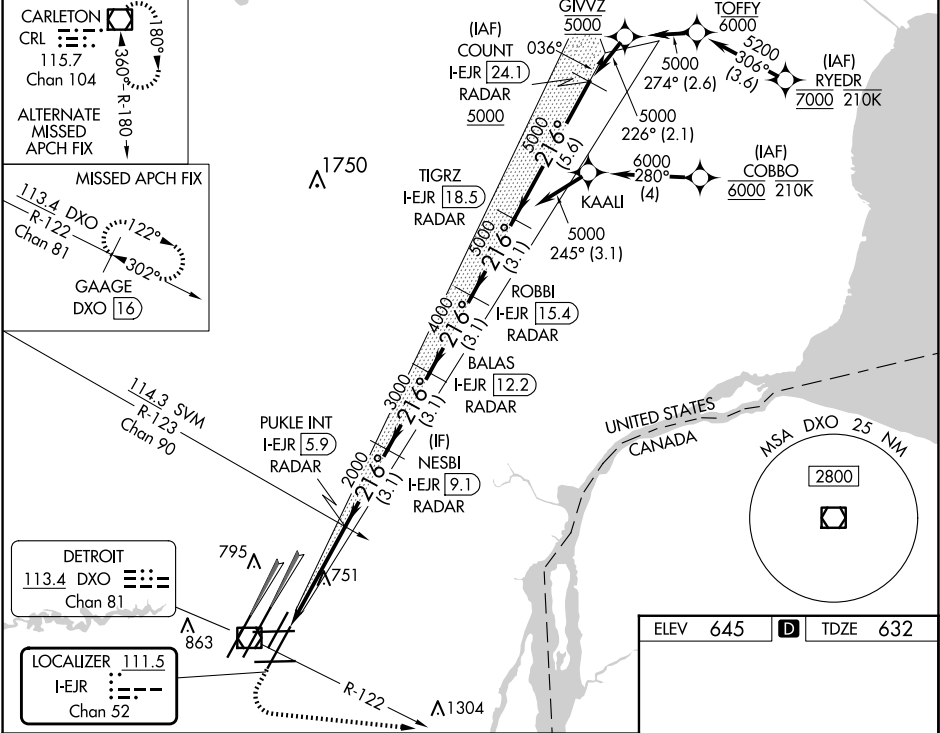


LOC/DME I-EJR <b>111.5</b> Chan <b>52</b>	APP CRS <b>216°</b>	Rwy Ldg TDZE <b>632</b> Apt Elev <b>645</b>
---	------------------------	---

ILS RWY 21L (SA CAT I & II)  
DETROIT METRO WAYNE COUNTY (DTW)

From RYEDR, COBBO: RNAV 1-DME/DME/IRU or GPS required. Aircraft not DME/DME/IRU or GPS equipped - RADAR required for procedure entry. DME or RADAR required.	MALSR 	MISSED APPROACH: Climb to 1100 then climbing left turn to 4000 on DXO R-122 to GAAGE/DXO 16 DME and hold, continue climb-in-hold to 4000.
Simultaneous approach authorized. SA CAT I: Requires specific OPSPEC, MSPEC, or LOA approval and use of HUD to DH. SA CAT II: Reduced lighting; requires specific OPSPEC, MSPEC, or LOA approval and use of autoland or HUD to touchdown.		

D-ATIS <b>133.675</b>	DETROIT APP CON <b>125.15 284.0</b>	METRO TOWER <b>118.4 317.725</b>	GND CON <b>121.8</b> (NW) <b>119.45</b> (NE) <b>132.725</b> (SW) <b>119.25</b> (SE)	CLNC DEL <b>120.65</b>	CPDLC
--------------------------	--	-------------------------------------	---	---------------------------	-------



1100	4000	DXO R-122	GAAGE DXO 16	NESBI I-EJR 9.1	BALAS I-EJR 12.2	ROBBI I-EJR 15.4	TIGRZ I-EJR 18.5	216° 5000
				PUKLE INT I-EJR 5.9	RADAR	RADAR	RADAR	GS 3.00° TCH 55
				2000	3000	4000	5000	
VGSi and ILS glidepath not coincident (VGSi Angle 3.00/TCH 80).								
4.1 NM				3.1 NM	3.1 NM	3.1 NM	3.1 NM	
CATEGORY	A			B	C	D		
S-ILS 21L	SA CAT I			RA 148/14	150	DA 782		
S-ILS 21L	SA CAT II			RA 98/12	100	DA 732		

