

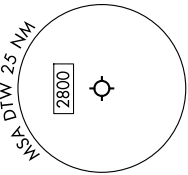
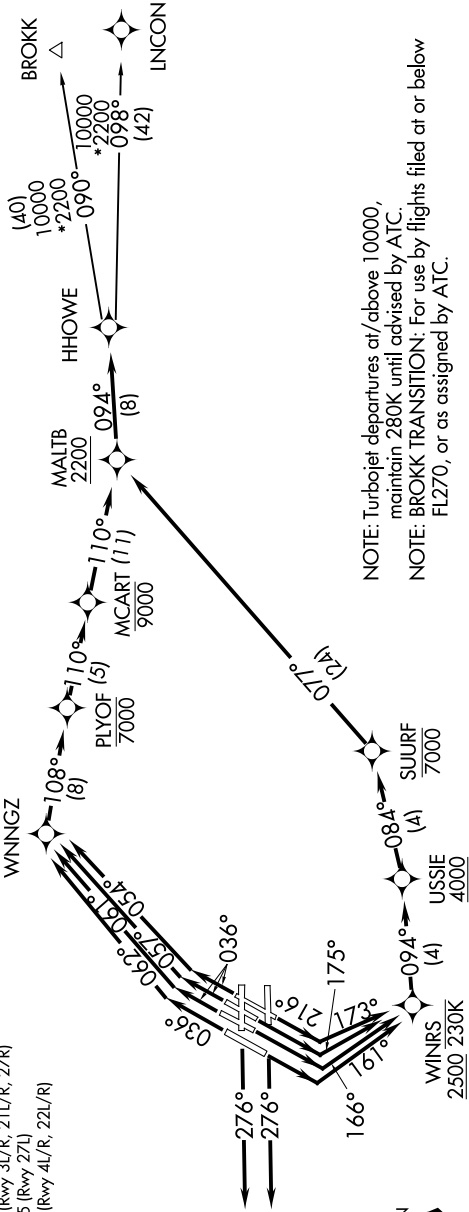
EC-1, 07 AUG 2025 to 04 SEP 2025

RNAV-1 DME/DME/IRU or GPS.

TOP ALTITUDE:
17000

RADAR required.

DETROIT DEP CON
125.525 284.0 (Rwy 27L/R)
132.025 284.0 (Rwy 3L/R, 4L/R, 21L/R, 22L/R)
D-ATIS 118.125
CINC DEL 120.65
CPDLC
GND CON
121.8 (NW) 119.45 (NE)
132.725 (SW) 119.25 (SE)
METRO TOWER
118.4 317.725 (Rwy 3L/R, 21L/R, 27R)
128.75 317.725 (Rwy 27L)
135.0 317.725 (Rwy 4L/R, 22L/R)



TAKEOFF MINIMUMS:
Rwy 27L/R: Standard
Rwy 3L/R, 4L/R, 21L/R, 22L/R: Standard with minimum climb of 500'/NM to 1146.

NOTE: Turbojet departures at/above 10000, maintain 280K until advised by ATC.
NOTE: BROKK TRANSITION: For use by flights filed at or below FL270, or as assigned by ATC.

(CONTINUED ON FOLLOWING PAGE)

NOTE: Chart not to scale.

EC-1, 07 AUG 2025 to 04 SEP 2025