

WAAS CH 58211 W33A	APP CRS 328°	Rwy Idg 5092 TDZE 624 Apt Elev 624
--	------------------------	---

RNAV (GPS) RWY 33
COLEMAN A YOUNG MUNI (DET)

RNP APCH - GPS.

T Rwy 33 helicopter visibility reduction below $\frac{3}{4}$ SM NA. For uncompensated
A Baro-VNAV systems, LNAV/VNAV NA below -17°C or above 54°C.
 Baro-VNAV and VDP NA when using DTW altimeter setting.

MISSED APPROACH: Climb to 4000 direct JTSI and on track 024° to SWWAN and hold.

ATIS 124.875	DETROIT APP CON 134.3 284.0	DETROIT CITY TOWER 121.3 257.8	GND CON 121.85
------------------------	---------------------------------------	--	--------------------------

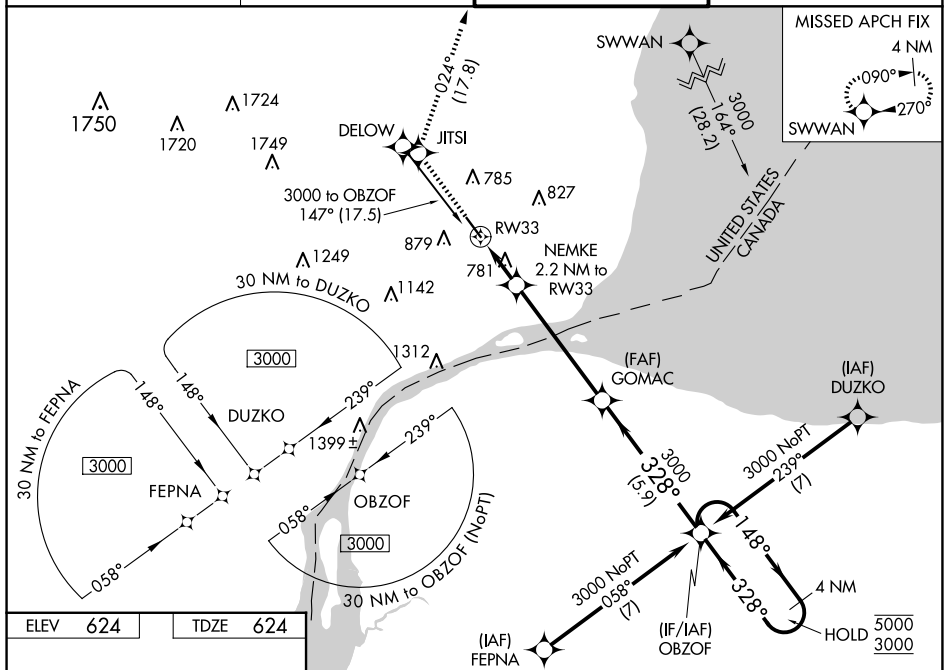


Diagram illustrating the GOMAC 3000 Holding Pattern. The pattern is a standard 180° turn holding pattern with a 328° inbound course and a 148° outbound course. Key distances and features include:

- 328°** Inbound Course
- 148°** Outbound Course
- 3000** Holding Altitude
- 4 NM** Holding Pattern
- OBZOF** (Obstacle Clearance Altitude) at 4 NM
- GP 3.00° TCH 49** (Ground Proximity 3.00° Threshold 49)
- Distances:** 1.2 NM to RW33, 2.2 NM to RW33, 1.2 NM, 1 NM, 5.2 NM, 5.9 NM
- Other Labels:** TWR 714, RW33, 3000, 1360, 328°, 148°, 3000, 4 NM Holding Pattern, GP 3.00° TCH 49