

LOC/DME I-DWW 111.5 Chan 52	APP CRS 053°	Rwy Ldg TDZE Apt Elev 931 958
---	------------------------	---

ILS or LOC RWY 5
DES MOINES INTL (DSM)

▼ For inop ALS, increase S-LOC 5 Cats C and D visibility to 1½ SM and CEDIP fix minimums Cats C and D visibility to RVR 5500.

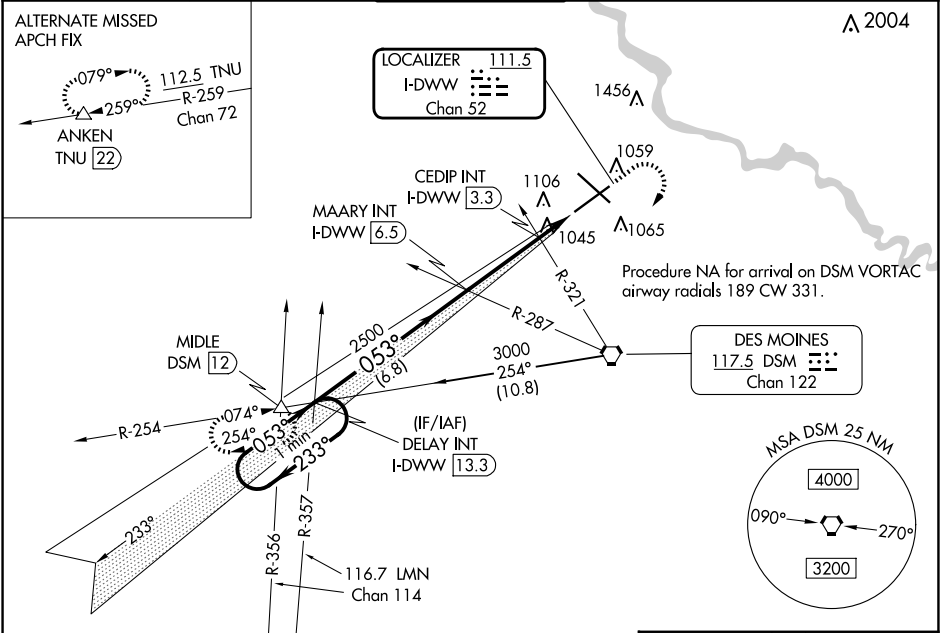
▲ Autopilot coupled approach NA below 1256 MSL.

#RVR 1800 authorized with use of FD or AP or HUD to DA.

MALSR

MISSED APPROACH: Climb to 1600 then climbing right turn to 3000 direct DSM VORTAC then on DSM VORTAC R-254 to MIDDLE INT/DSM 12 DME and hold.

ATIS 119.55	DES MOINES APP CON 123.9 307.15	DES MOINES TOWER 118.3 257.8	GND CON 121.9 348.6	CLNC DEL 134.15 317.55
-----------------------	---	--	-------------------------------	----------------------------------



One Minute Holding Pattern

3000

233°

053°

GS 3.00°

TCH 55'

DELAY INT I-DWW [13.3]

MAARY INT I-DWW [6.5]

CEDIP INT I-DWW [3.3]

*LOC only

*I-DWW [2.7]

I-DWW [1.7]

*1440'

6.8 NM

3.2 NM

0.6

1 NM

CATEGORY	A	B	C	D
S-ILS 5 #	1131/24			
S-LOC 5	1440/24	509 (500-½)	1440/55	509 (500-1)
CIRCLING	1440-1	482 (500-1)	1600-1¾ 642 (700-1¾)	1760-2½ 802 (900-2½)
CEDIP FIX MINIMUMS (DUAL VOR RECEIVERS OR DME REQUIRED)				
S-LOC 5	1300/24	369 (400-½)	1300/35	369 (400-¾)
CIRCLING	1420-1	462 (500-1)	1600-1¾ 642 (700-1¾)	1760-2½ 802 (900-2½)

ELEV 958

TDZE 931

REIL Rwy 5 and 23

TDZ/CL Rwy 31

HIRL Rwy 13-31 and 5-23

FAF to MAP 4.8 NM

Knots	60	90	120	150	180
Min:Sec	4:48	3:12	2:24	1:55	1:36

NC-3, 07 AUG 2025 to 04 SEP 2025

NC-3, 07 AUG 2025 to 04 SEP 2025