

LOC/DME I-DSM 110.3 Chan 40	APP CRS 311°	Rwy Ldg TDZE Apt Elev 9001 958 958
---	------------------------	--

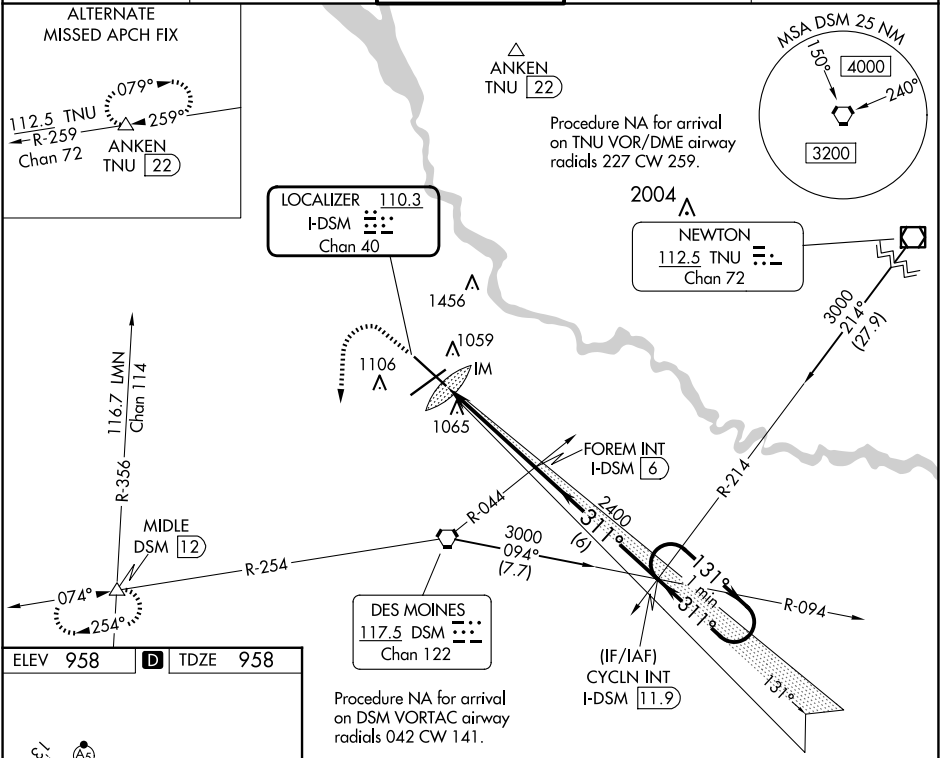
ILS or LOC RWY 31
DES MOINES INTL (DSM)

A For inop ALS, increase S-ILS 31 Cat E visibility to RVR 4000 and S-LOC 31 Cat E visibility to RVR 6000.

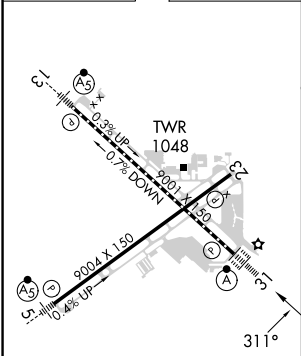
ALSF-2

MISSED APPROACH: Climb to 1600 then climbing left turn to 3000 on heading 180° and on DSM VORTAC R-254 to MIDDLE INT/12 DME and hold.

ATIS 119.55	DES MOINES APP CON 123.9 307.15	DES MOINES TOWER 118.3 257.8	GND CON 121.9 348.6	CLNC DEL 134.15 317.55
-----------------------	---	--	-------------------------------	----------------------------------



ELEV 958	D	TDZE 958
----------	----------	----------



REIL Rws 5 and 23
TDZ/CL Rwy 31
HIRL Rws 13-31 and 5-23
FAF to MAP 4.4 NM
Knots 60 90 120 150 180
Min:Sec 4:24 2:56 2:12 1:46 1:28

1600	3000	DSM R-254	MIDDLE △	One Minute Holding Pattern	
↑		hdg 180°			
*LOC only					
I-DSM 1.6		IM	*I-DSM 2.6	FOREM INT I-DSM 6	CYCLN INT I-DSM 11.9
2400		2400		131° → 3000 ← 311°	
311°		2400		GS 3.00° TCH 52	
0.2		0.8 NM	3.4 NM	6 NM	
CATEGORY	A	B	C	D	E
S-ILS 31	1158/18 200 (200-½)				
S-LOC 31	1340/24	382 (400-½)	1340/35	382 (400-¾)	
CIRCLING	1420-1	462 (500-1)	1600-1½ 642 (700-1½)	1760-2½ 802 (900-2½)	1760-2¾ 802 (900-2¾)

NC-3, 07 AUG 2025 to 04 SEP 2025

NC-3, 07 AUG 2025 to 04 SEP 2025