

APP CRS
355°

Rwy Idg
TDZE
Apt Elev

5494
197
202

RNAV (GPS) RWY 36

BEAUREGARD RGNL (DRI)

▼

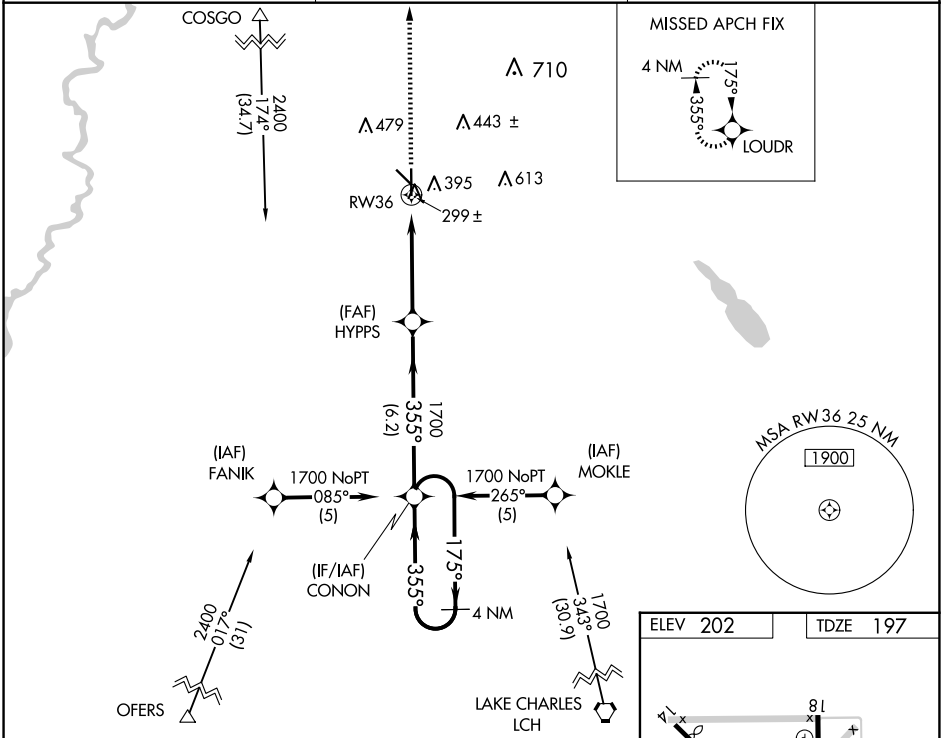
▲

Inoperative table does not apply. For uncompensated Baro-VNAV systems, LNAV/VNAV NA below -15°C (5°F) or above 48°C (118°F). DME/DME RNP-0.3 NA. Visibility reduction by helicopters NA. When local altimeter setting not received, use Fort Polk altimeter setting and increase LNAV/LNAV DA to 622 feet and visibility all Cats ¼ SM; increase all MDAs 60 feet and visibility LNAV Cats C/D and Circling Cats C/D ¼ SM.

ODALS

MISSED APPROACH:
Climb to 1900 direct LOUDR and hold.

AWOS-3PT 118.225	POLK APP CON 123.7 261.3	UNICOM 122.8 (CTAF) 0
---------------------	-----------------------------	--------------------------



1900
↑

LOUDR

VGSI and RNAV glidepath not coincident
(VGSI Angle 3.00/TCH 50).

4 NM
Holding Pattern

RW36

HYPPS

CONON

1700

355°

174°

GP 3.00°
TCH 40

CATEGORY	A	B	C	D
LNAV/VNAV	DA	569-1¼	372 (400-1¼)	
LNAV MDA	660-1	463 (500-1)	660-1¼ 463 (500-1¼)	660-1½ 463 (500-1½)
CIRCLING	720-1	518 (600-1)	780-1½ 578 (600-1½)	1000-2½ 798 (800-2½)

REIL Rwy 18 0

MIRL Rwy 18-36 0

36

355°