

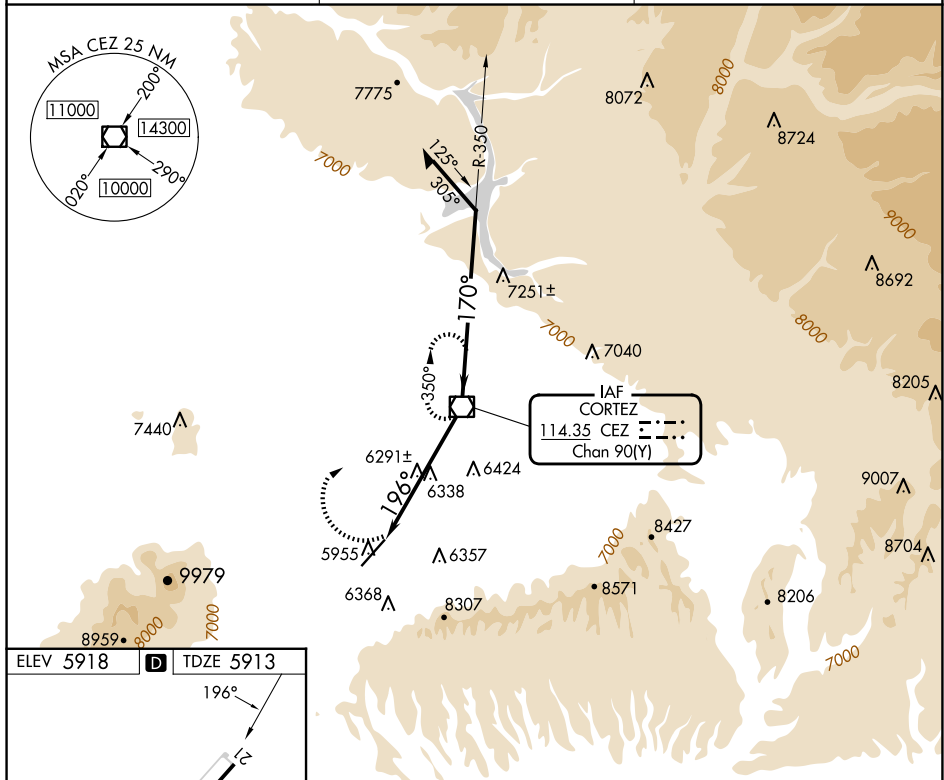
VOR/DME CEZ 114.35 Chan 90 (Y)	APP CRS 196°	Rwy Ldg 7205 TDZE 5913 Apt Elev 5918
--	------------------------	---

VOR RWY 21
CORTEZ MUNI (CEZ)

CAUTION: Highway lights located between facility and runway are aligned with approach area. Rwy 21 helicopter visibility reduction below $\frac{3}{4}$ SM NA. Circling NA southeast of Rwy 3-21.

MISSED APPROACH: Climbing right turn to 9800 direct to CEZ VOR/DME and hold.

ASOS 135.625	DENVER CENTER 118.575 348.7	UNICOM 122.8 (CTAF) 0
------------------------	---------------------------------------	--



ELEV 5918 **D** TDZE 5913

196°

7205 X 100

3

REIL Rwy 3 and 21 **U**
MIRL Rwy 3-21 **U**

FAF to MAP 5.5 NM

Knots	60	90	120	150	180
Min:Sec	5:30	3:40	2:45	2:12	1:50

Diagram illustrating the VOR/DME station (CEZ) and its associated frequencies and distances. The station is located at the intersection of the 5.5 NM radius and the 3.49° TCH 50. The diagram shows the 9800 frequency box, the CEZ 5.5 box, and the 5.5 NM distance line. The bearing to 9800 is 350°, and the bearing to 8000 is 170°.