

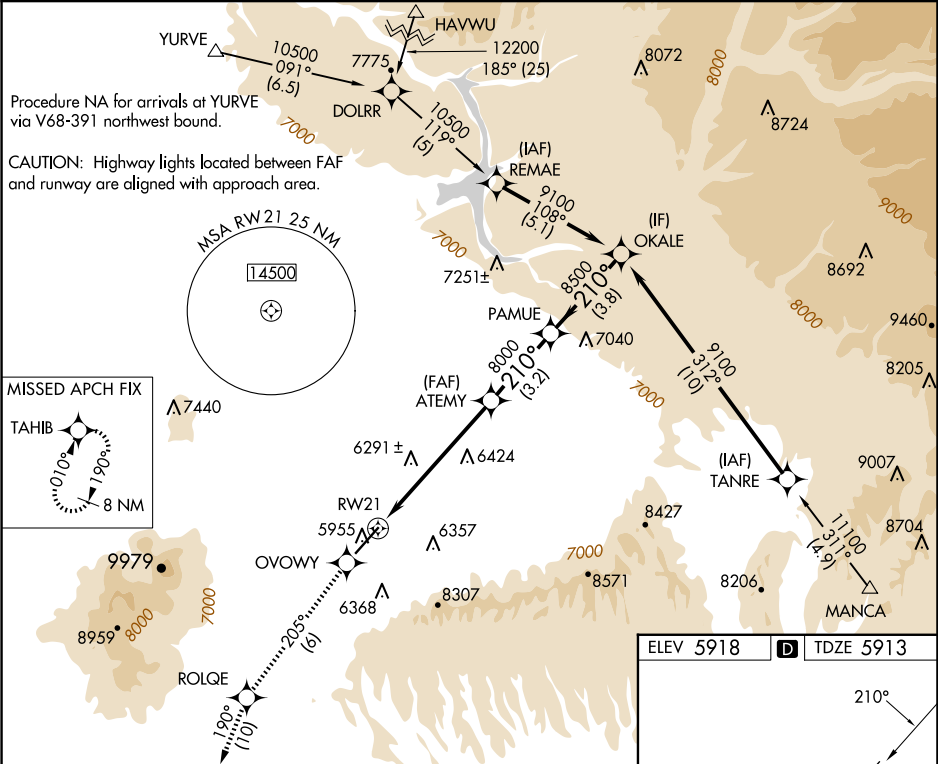
WAAS CH 99699 W21A	APP CRS 210°	Rwy Ldg TDZE Apt Elev 7205 5913 5918
--	------------------------	--

RNAV (GPS) Z RWY 21

CORTEZ MUNI (C/EZ)

RNP APCH. <div><div>▼</div><div>▲</div></div>	When VGSI inop, procedure NA at night.	MISSED APPROACH: Climb to 9000 direct OVOWY and via 205° track to ROLQE and via 190° track to TAHIB and hold.
--	--	---

ASOS 135.625	DENVER CENTER 118.575 348.7	UNICOM 122.8 (CTAF) 0
------------------------	---------------------------------------	---------------------------------



9000 ↑	OVOWY ✧	tr 205°	ROLQE ✧	tr 190°	TAHIB ✧	PAMUE	OKALE
VGSI and RNAV glidepath not coincident (VGSI Angle 3.00/TCH 50).							
RW21 ↻		ATEMY ✕		210°		9100	Procedure Turn NA GP 3.10° TCH 50
6.1 NM		3.2 NM		8500		8000	
CATEGORY	A		B		C		D
LPV DA	6215-1 302 (300-1)						
LNAV/ VNAV DA	NA						
LNAV MDA	7140-1¼ 1227 (1300-1¼)		7140-1½ 1227 (1300-1½)		7140-3 1227 (1300-3)		

