

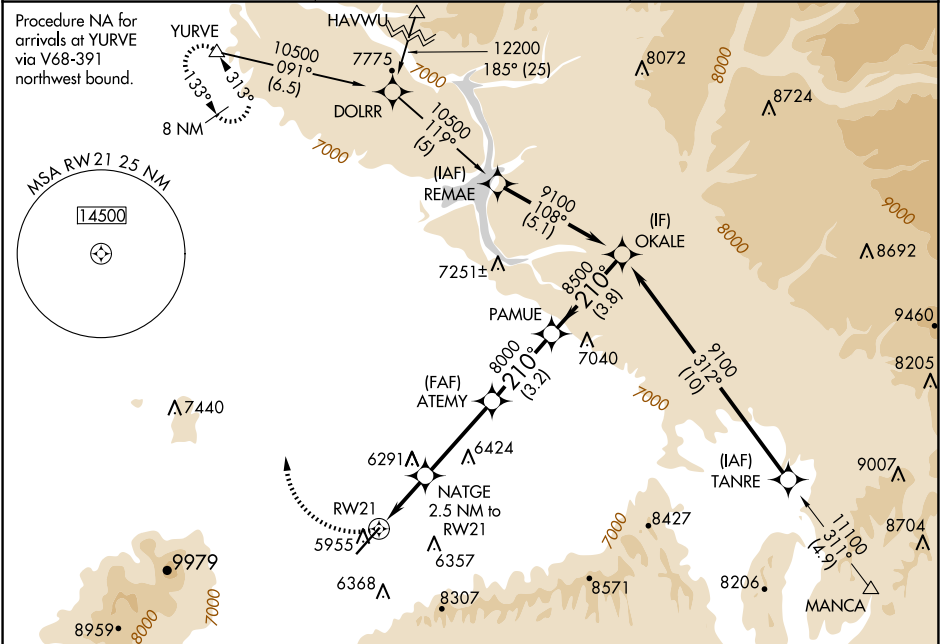
APP CRS	Rwy Ldg	7205
210°	TDZE	5913
	Apt Elev	5918

RNAV (GPS) Y RWY 21

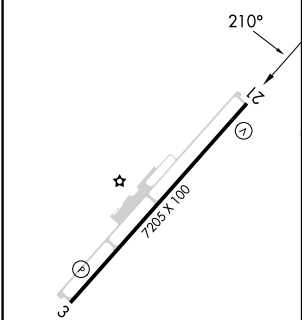
CORTEZ MUNI (C/EZ)

<div><div></div><div></div></div> <div>DME/DME RNP-0.3 NA. When VGSI inop, procedure NA at night. Circling NA southeast of Rwy 3-21.</div>	MISSED APPROACH: Climbing right turn to 9800 direct YURVE and hold.
--	---

ASOS 135.625	DENVER CENTER 118.575 348.7	UNICOM 122.8 (CTAF) 0
-----------------	--------------------------------	---------------------------------



ELEV 5918	D	TDZE 5913
-----------	----------	-----------



	YURVE	NATGE 2.5 NM to RW21	ATEMY	PAMUE	OKALE
	9800	6740	8000	8500	9100
	2.5 NM	3.6 NM	3.2 NM	3.8 NM	
CATEGORY	A	B	C	D	
LNAV MDA	6560-1	647 (700-1)	6560-1¾ 647 (700-1¾)	6560-2	647 (700-2)
CIRCLING	6560-1 642 (700-1)	6680-2 762 (800-2)	6800-2¾ 882 (900-2¾)	7060-3	1142 (1200-3)