

DEL RIO, TEXAS

24305

VOR/DME RWY 31C

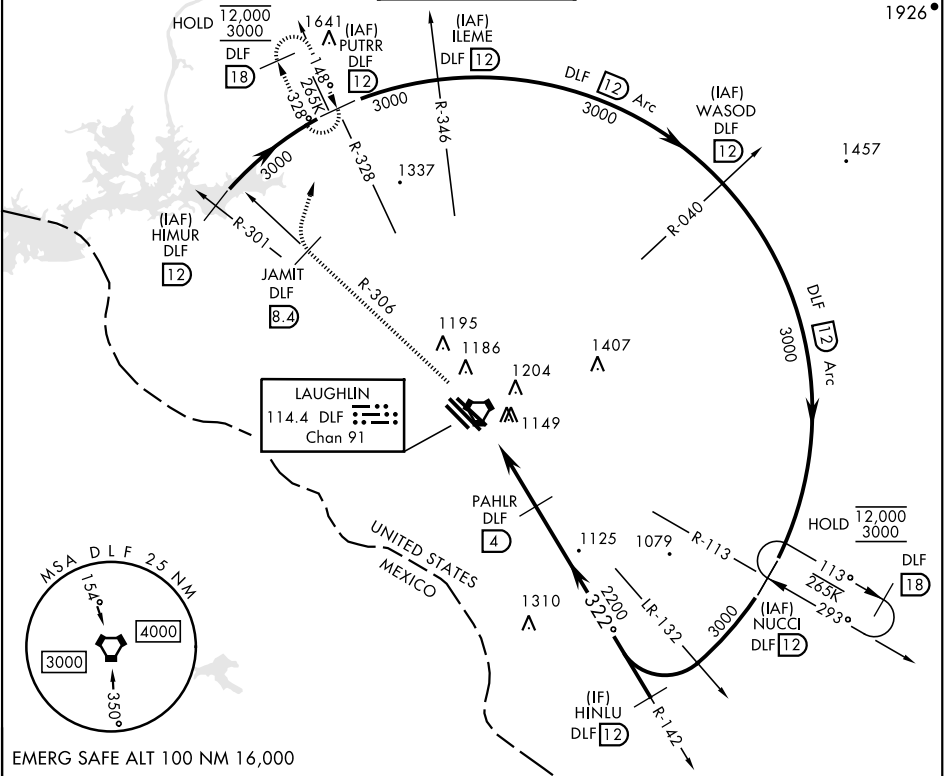
VORTAC DLF <b>114.4</b> Chan <b>91</b>	APCH CRS <b>322°</b>	Rwy Idg TDZE Arpt Elev <b>8852</b> <b>1079</b> <b>1082</b>
--	-------------------------	---

[USAF]

LAUGHLIN AFB (KDLF)

<b>V</b> *Circling not authorized in sector SW of Rwy 13R-31L.	MISSED APPROACH: Climb to 3000 on DLF VORTAC R-306 to 8.4 DME (JAMIT), then turn right to intercept DLF R-328 to 12 DME (PUTRR), and hold.
--	--

ATIS ★ <b>114.4 269.9</b>	DEL RIO APP CON <b>119.6 259.1</b>	TOWER ★ <b>125.2 307.375</b>	GND CON <b>275.8</b>	CLNC DEL <b>120.5 335.8</b>
------------------------------	---------------------------------------	---------------------------------	-------------------------	--------------------------------



ELEV 1082	TDZE 1079	3000	JAMIT R-306 DLF 8.4	PUTRR R-328 DLF 12	HINLU DLF 12
Rwy 31L Idg 6241'		322°			
MIRL Rwy 13R-31L HIRL Rwy 13C-31C, 13L-31R		322°			
		3000			
		2200			
		3.02°			
		TCH 55			
		0.7 NM			
		2.7 NM			
CATEGORY	A	B	C	D	E
S-31C	1420-1		341	(400-1)	
CIRCLING*	1500-1 418 (500-1)	1540-1 458 (500-1)	1700-1½ 618 (700-1½)	1700-2 618 (700-2)	1740-2½ 658 (700-2½)

DEL RIO, TEXAS

29°22'N-100°47'W

LAUGHLIN AFB (KDLF)

Amtd 4 20APR23

VOR/DME RWY 31C

SC-3, 07 AUG 2025 to 04 SEP 2025

SC-3, 07 AUG 2025 to 04 SEP 2025