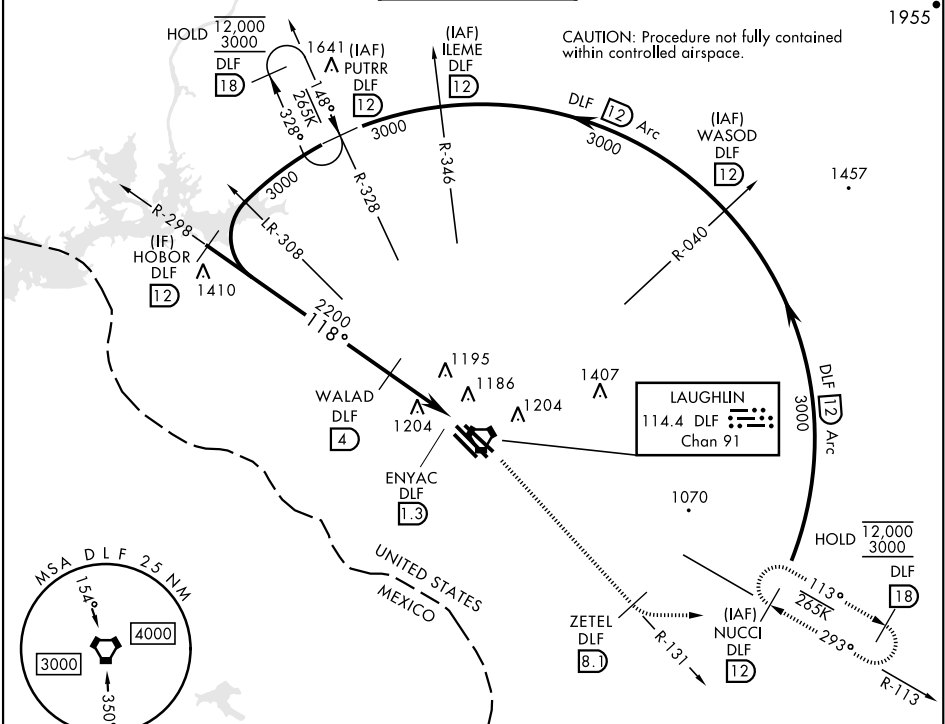
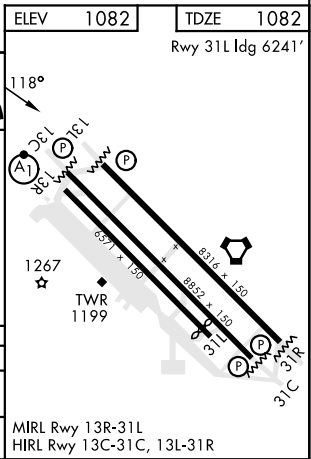
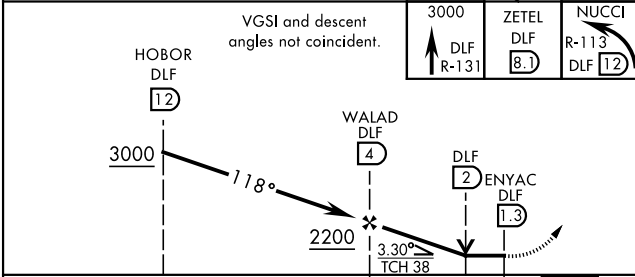


VOR/DME RWY 13C

VORTAC DLF 114.4 Chan 91	APCH CRS 118°	Rwy Idg 8852 TDZE 1082 Arpt Elev 1082	[USAF]	LAUGHLIN AFB (KDLF)
▼** When ALS inop, increase CAT AB RVR to 55 and vis to 1 mile, CAT CDE RVR to 60 and vis to 1 1/8 miles. ** Circling not authorized in sector SW of Rwy 13R-31L.			ALSF-1 A1	MISSED APPROACH: Climb to 3000 on DLF VORTAC R-131 to 8.1 DME (ZETEL), then turn left to intcp DLF R-113 to 12 DME (NUCCI) and hold.
ATIS ★ 114.4 269.9	DEL RIO APP CON 119.6 259.1	TOWER ★ 125.2 307.375	GND CON 275.8	CLNC DEL 120.5 335.8



EMERG SAFE ALT 100 NM 16,000



CATEGORY	A	B	C	D	E
S-13C *	1480/24 398 (400-1/2)		1480/40 398		(400-3/4)
CIRCLING **	1500-1 418 (500-1)	1540-1 458 (500-1)	1700-1 3/4 618 (700-1 3/4)	1700-2 618 (700-2)	1740-2 1/4 658 (700-2 1/4)

VOR/DME RWY 13C

SC-3, 07 AUG 2025 to 04 SEP 2025

SC-3, 07 AUG 2025 to 04 SEP 2025