

DEL RIO, TEXAS

ILS or LOC/DME Y RWY 31C

LOC I-ILH <u>108.9</u>	APCH CRS 308°	Rwy Idg 8852 6241 8316 TDZE 1079 1080 1078 Arpt Elev 1082
----------------------------------	-------------------------	--

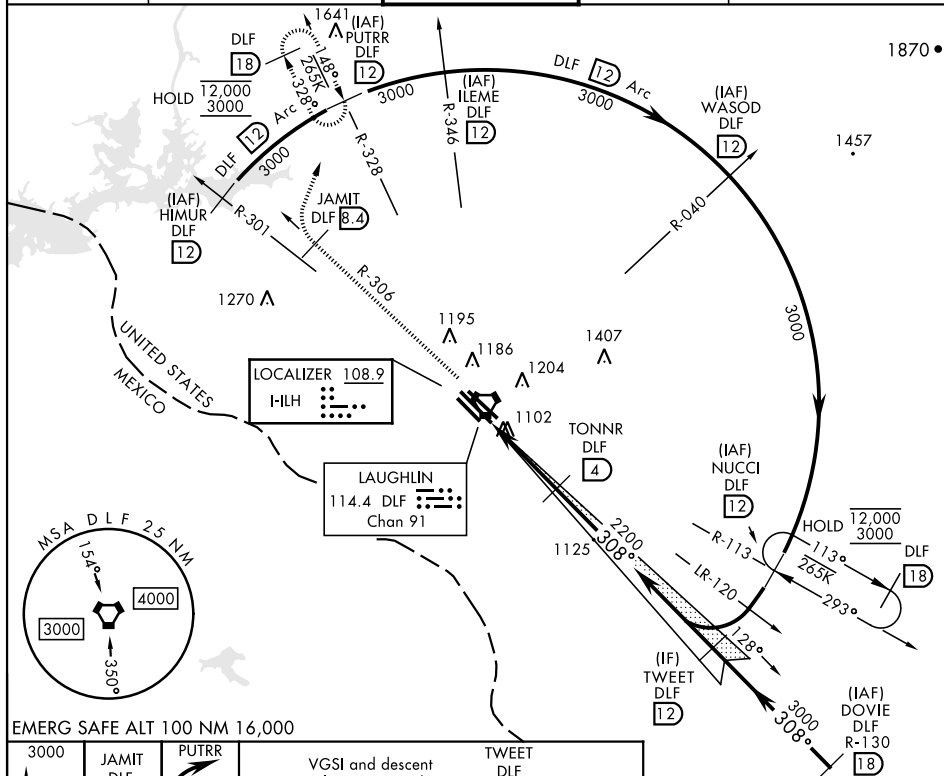
[USAF]

LAUGHLIN AFB (KDLF)

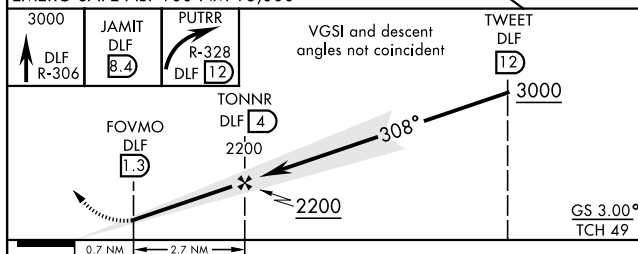
* Circling W of Rwy 13R-31L not authorized.


MISSED APPROACH: Climb to 3000 on DLF VORTAC R-306 to 8.4 DME (JAMIT), then turn right to intercept DLF R-328 to 12 DME (PUTRR) and hold.

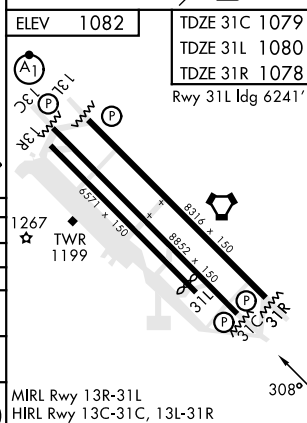
ATIS ★ 114.4 269.9	DEL RIO APP CON 119.6 259.1	TOWER ★ 125.2 307.375	GND CON 275.8	CLNC DEL 120.5 335.8
-----------------------	--------------------------------	--------------------------	------------------	-------------------------



EMERG SAFE ALT 100 NM 16,000



CATEGORY	A	B	C	D	E
S-LS 31C	1279- $\frac{3}{4}$		200	(200- $\frac{3}{4}$)	
S-LOC 31C	1360-1	281 (300-1)	1360- $\frac{7}{8}$		281 (300- $\frac{7}{8}$)
SIDESTEP 31L	1360-1	280 (300-1)	1360-1 $\frac{1}{2}$ 280 (300-1 $\frac{1}{2}$)	1360-2	280 (300-2)
SIDESTEP 31R	1380-1	302 (300-1)	1380-1 $\frac{1}{2}$ 302 (300-1 $\frac{1}{2}$)	1380-2	302 (300-2)
 CIRCLING*	1500-1 418 (500-1)	1540-1 458 (500-1)	1700-1 $\frac{1}{2}$ 618 (700-1 $\frac{1}{2}$)	1700-2 618 (700-2)	1740-2 $\frac{1}{4}$ 658 (700-2 $\frac{1}{4}$)



DEL RIO, TEXAS

29°22'N-100°47'W

LAUGHLIN AFB (KDLEF)

Amdt 6 05OCT23

ILS or LOC/DME Y RWY 31C

SC-3, 07 AUG 2025 to 04 SEP 2025

SC-3, 07 AUG 2025 to 04 SEP 2025