

DEL RIO, TEXAS

25051

LOC I-DLF
110.3

APCH CRS
128°

Rwy Idg
TDZE
Arpt Elev
8852 8316 6571
1082 1078 1077
1082

HI-ILS or LOC/DME Z RWY 13C

[USAF]

LAUGHLIN AFB (KDLF)

▼ * When ALS inop, increase RVR to 40 and vis to ¾ mile.
** When ALS inop, increase CAT AB RVR to 55 and vis to 1 mile, CAT CDE RVR to 50 and vis to 1 mile.
*** Circling W of Rwy 13R-31L not authorized.

ALSF-1
(A1)

MISSED APPROACH: Climb to 3000 on DLF VORTAC R-131 to 8.1 DME (ZETEL), then turn left to intercept DLF R-113 to 12 DME (NUCCI) and hold.

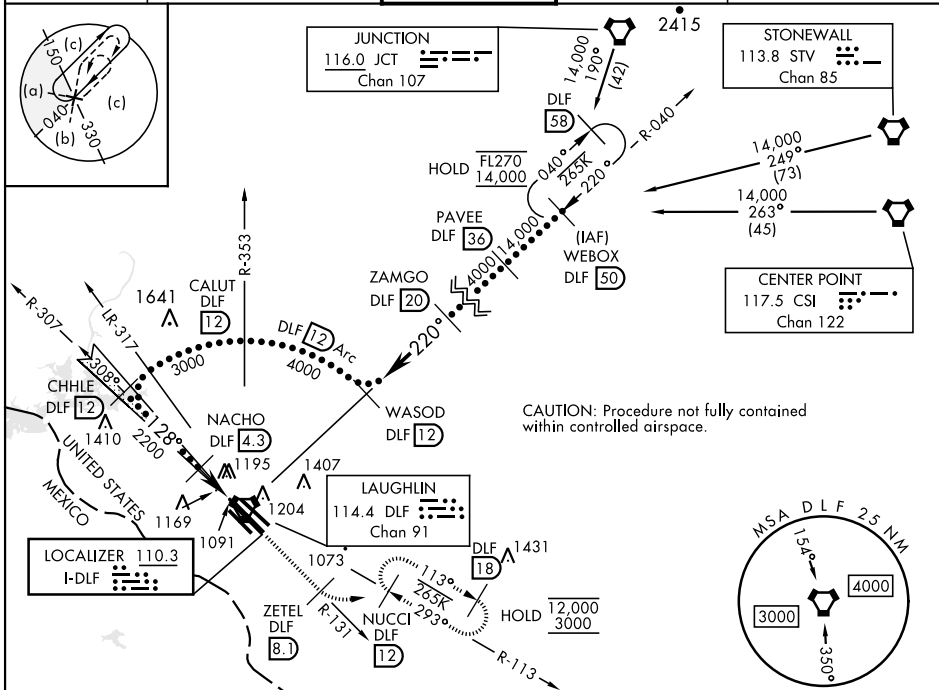
ATIS ★
114.4 269.9

DEL RIO APP CON
119.6 259.1

TOWER ★
125.2 307.375

GND CON
275.8

CLNC DEL
120.5 335.8



CAUTION: Procedure not fully contained within controlled airspace.

EMERG SAFE ALT 100 NM 16,000

					ELEV 1082		TDZE 13C 1082 TDZE 13L 1078 TDZE 13R 1077		Rwy 31L Idg 6241'	
GS 3.00° TCH 38					ZETEL DLF 8.1		NUCCI R-113 DLF 12			
CATEGORY	A		B		C		D		E	
S-ILS 13C *	1282/24		200		(200-½)					
S-LOC 13C **	1420/24 338 (400-½)		1420/26		338 (400-½)					
SIDESTEP 13L	1440-1 362 (400-1)		1440-1½ 362 (400-½)		1440-2 362 (400-2)					
SIDESTEP 13R	1480-1 403 (400-1)		1480-1½ 403 (400-½)		1480-2 403 (400-2)					
CIRCLING ***	1500-1 418 (500-1)		1540-1 458 (500-1)		1700-1 618 (700-1¾)		1740-2 658 (700-2¼)		MIRL Rwy 13R-31L HIRL Rwy 13C-31C, 13L-31R	

DEL RIO, TEXAS

29°22'N-100°47'W

LAUGHLIN AFB (KDLF)

Amdt 6 20FEB25

HI-ILS or LOC/DME Z RWY 13C