

## ROYES SEVEN DEPARTURE

DAYTONA BEACH INTL (DAB)  
DAYTONA BEACH, FLORIDA

ATIS  
132.875  
CLNC DEL  
119.3  
GND CON  
121.9 348.6  
DAYTONA TOWER  
120.7 257.8  
DAYTONA DEP CON  
118.85 353.825

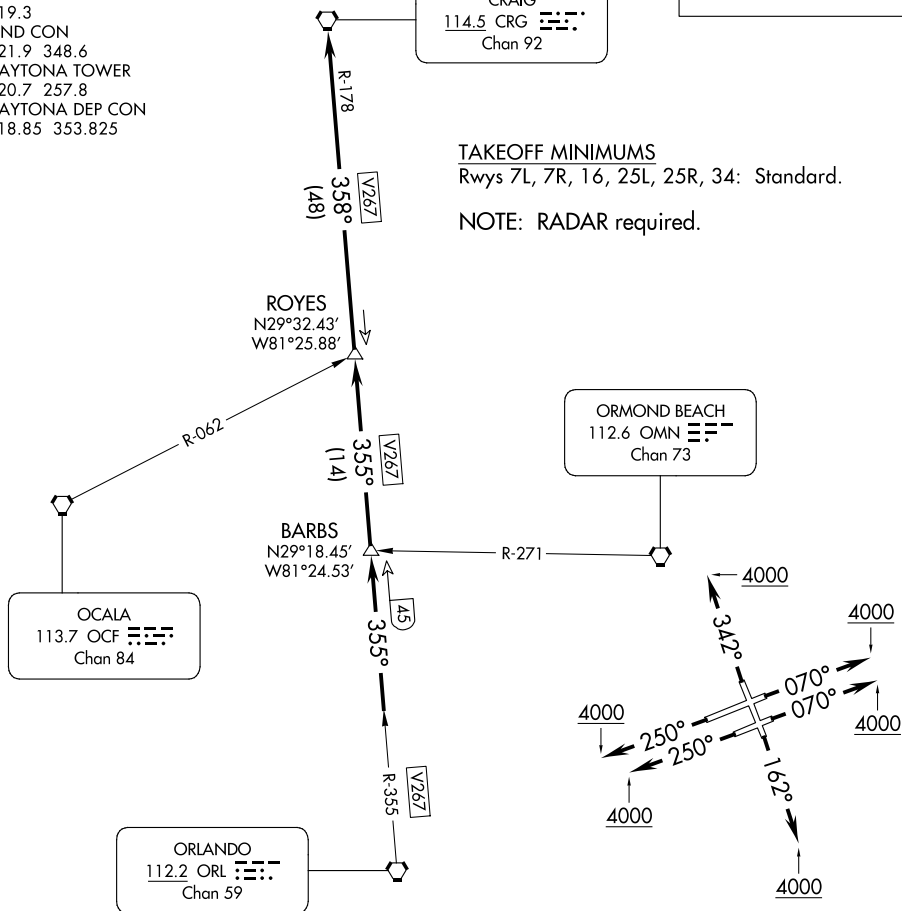
**TOP ALTITUDE:**  
4000

CRAIG  
CRG  
Chan 92

## TAKEOFF MINIMUMS

Rwys 7L, 7R, 16, 25L, 25R, 34: Standard.

NOTE: RADAR required.



NOTE: Chart not to scale.

SE-3, 07 AUG 2025 to 04 SEP 2025



## DEPARTURE ROUTE DESCRIPTION

TAKEOFF RUNWAY 7L: Climb heading 070° to 4000 or as assigned by ATC, thence . . . .

**TAKEOFF RUNWAY 7R:** Climb heading 070° to 4000 or as assigned by ATC, thence . . .

TAKEOFF RUNWAY 16: Climb heading 162° to 4000 or as assigned by ATC, thence . . .

**TAKEOFF RUNWAY 25L:** Climb heading 250° to 4000 or as assigned by ATC, thence . . .

TAKEOFF RUNWAY 25R: Climb heading 250° to 4000 or as assigned by ATC, thence . . . .

**TAKEOFF RUNWAY 34:** Climb heading 342° to 4000 or as assigned by ATC, thence . . .

... Expect vectors to intercept CRG R-178 to CRG VORTAC, then via assigned route.  
Expect clearance to filed altitude/flight level ten (10) minutes after departure.

## ROYES SEVEN DEPARTURE

(ROYES7.ROYES) 25JUN15

DAYTONA BEACH, FLORIDA  
DAYTONA BEACH INTL (DAB)