

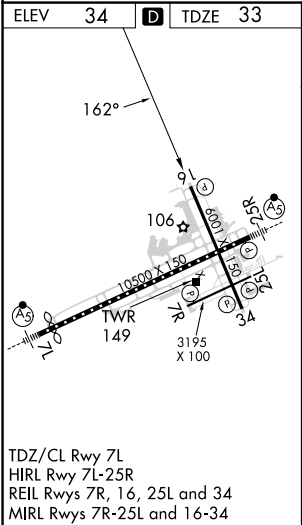
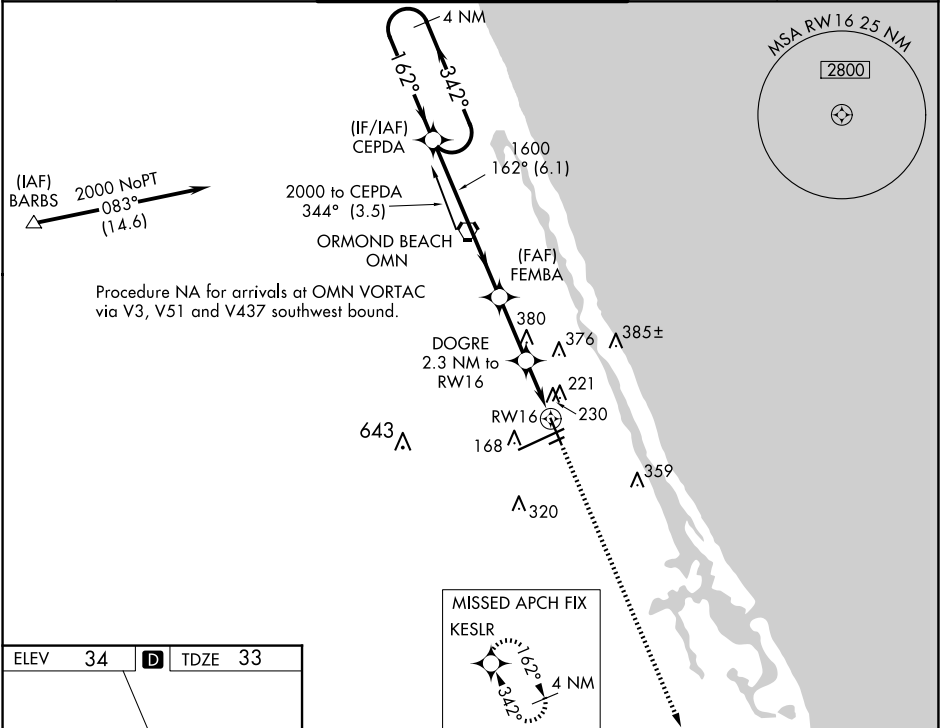
WAAS CH 45529 W16A	APP CRS 162°	Rwy Idg TDZE 33 Apt Elev 34
--	------------------------	---

RNAV (GPS) RWY 16

DAYTONA BEACH INTL (DAB)

<div><div>▼</div><div>Baro-VNAV NA below -15° C (5° F). DME/DME RNP-0.3 NA. Helicopter visibility reduction below ¾ SM NA.</div></div>	MISSED APPROACH: Climb to 1700 direct KESLR and hold.
--	---

ATIS 132.875	DAYTONA APP CON 125.8 269.075	DAYTONA TOWER 120.7 257.8	GND CON 121.9 348.6	CLNC DEL 119.3
------------------------	---	-------------------------------------	-------------------------------	--------------------------



4 NM Holding Pattern CEPDA		VGSI and RNAV glidepath not coincident (VGSI Angle 3.00/TCH 50).		1700 KESLR
2000		FEMBA		*RNAV only.
GP 3.00° TCH 45		DOGRE 2.3 NM to RW16		
1600		800		
6.1 NM		2.5 NM		
0.9 NM		1.3 NM		
CATEGORY	A	B	C	D
LPV DA	358-1¼		325 (400-1¼)	
RNAV/VNAV DA	479-1½		446 (500-1½)	
RNAV MDA	500-1	467 (500-1)	500-1¼ 467 (500-1¼)	500-1½ 467 (500-1½)
C CIRCLING	540-1½	506 (600-1½)	680-1¾ 646 (700-1¾)	700-2 666 (700-2)