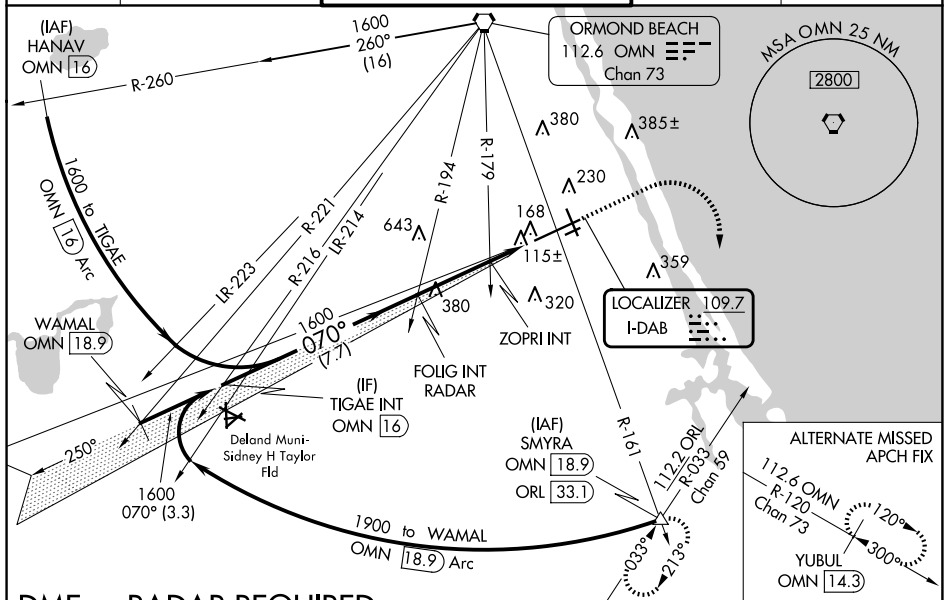


ILS or LOC RWY 7L  
DAYTONA BEACH INTL (DAB)

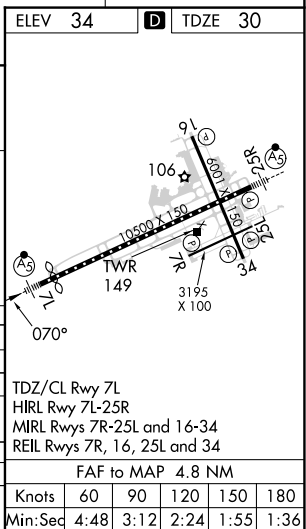
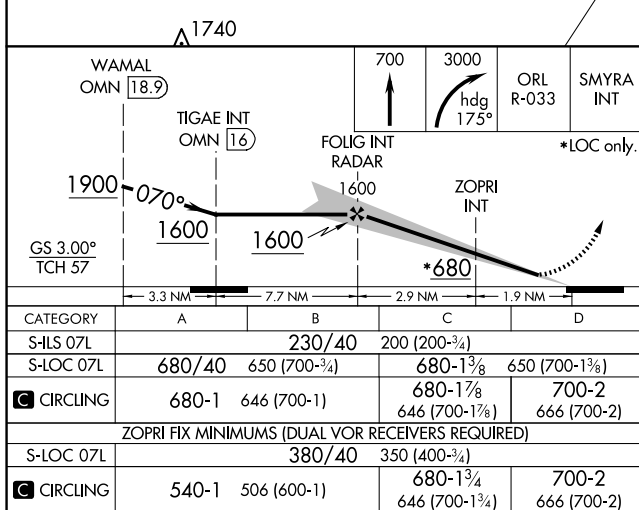
**T** Inoperative table does not apply to S-ILS 07L. Helicopter visibility reduction below RVR 4000 NA. For inop MALSR, increase S-LOC 07L Cat A and B  
**A** and ZOPRI fix minimums S-LOC 07L all Cats visibility to RVR 5500. Autopilot coupled approach NA below 535.

**MISSED APPROACH:** Climb to 700 then climbing right turn to 3000 on heading 175° and ORL VORTAC R-033 to SMYRA/ORL 33.1 DME and hold.

ATIS 132.875	DAYTONA APP CON 125.8 269.075	DAYTONA TOWER 120.7 257.8	GND CON 121.9 348.6	CLNC DEL 119.3
-----------------	----------------------------------	------------------------------	------------------------	-------------------



## DME or RADAR REQUIRED



SE-3, 07 AUG 2025 to 04 SEP 2025