

LOC/DME I-DBF	APP CRS	Rwy Idg	10293
109.7	250°	TDZE	34
Chan 34		Apt Elev	34

ILS or LOC RWY 25R

DAYTONA BEACH INTL (DAB)

ATIS

132.875

DAYTONA APP CON

125.8 269.075

DAYTONA TOWER

120.7 257.8

GND CON

121.9 348.6

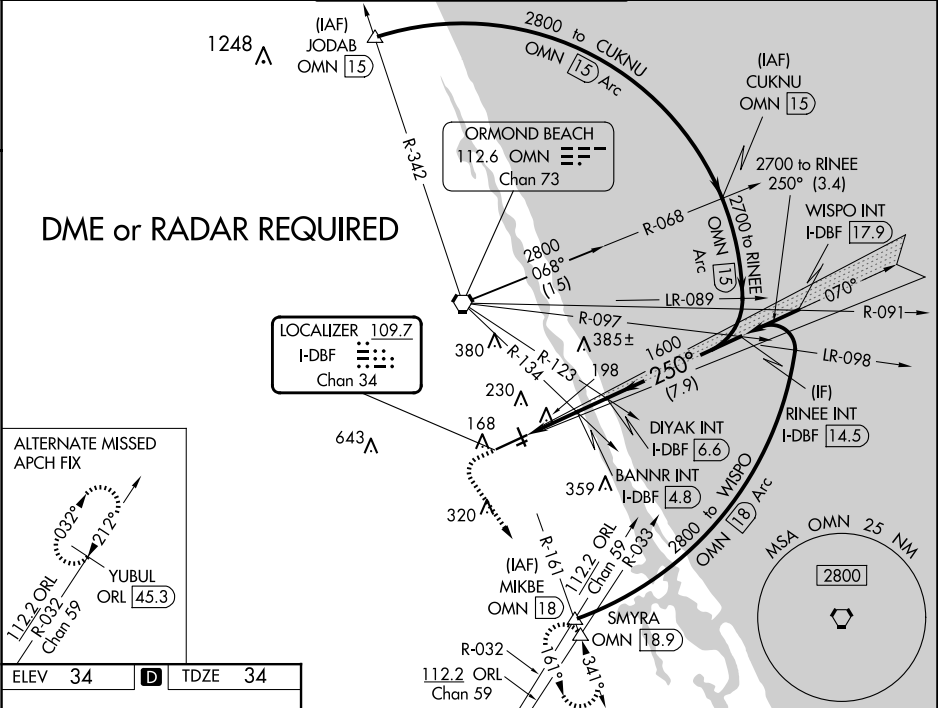
CLNC DEL

119.3

MALSR

MISSED APPROACH:

Climb to 500 then climbing left turn to 3000 on heading 150° and OMN VORTAC R-161 to SMYRA INT/OMN 18.9 DME and hold, continue climb-in-hold to 3000.



ELEV 34

TDZE 34

TDZ/CL Rwy 7L

HIRL Rwy 7L-25R

MIRL Rwy 7R-25L and 16-34

REIL Rwy 7R, 16, 25L and 34

FAF to MAP 4.8 NM

Knots	60	90	120	150	180
Min:Sec	4:48	3:12	2:24	1:55	1:36

500 ↑		3000 hdg 150°	OMN R-161	SMYRA △	VGSi and ILS glidepath not coincident (VGSi Angle 3.00/TCH 72). DIYAK INT I-DBF 6.6		RINEE INT I-DBF 14.5	
*LOC only.		I-DBF 1.8	*I-DBF 2.9	BANNR INT I-DBF 4.8	1600	250°	2700	GS 3.00° TCH 55
		1.1 NM	1.9 NM	1.8 NM	7.9 NM			
CATEGORY		A		B		C		D
S-ILS 25R		234-½		200 (200-½)				
S-LOC 25R		1040-¾ 1006 (1100-¾)	1040-1 1006 (1100-1)	1040-2½	1006 (1100-2½)			
CIRCLING		1040-1¼ 1006 (1100-1¼)	1040-1½ 1006 (1100-1½)	1040-3	1006 (1100-3)			
BANNR FIX MINIMUMS (DUAL VOR RECEIVERS or DME REQUIRED)								
S-LOC 25R		440-½	406 (500-½)	440-¾	406 (500-¾)			
CIRCLING		540-1	506 (600-1)	680-1¾ 646 (700-1¾)	700-2 666 (600-2)			