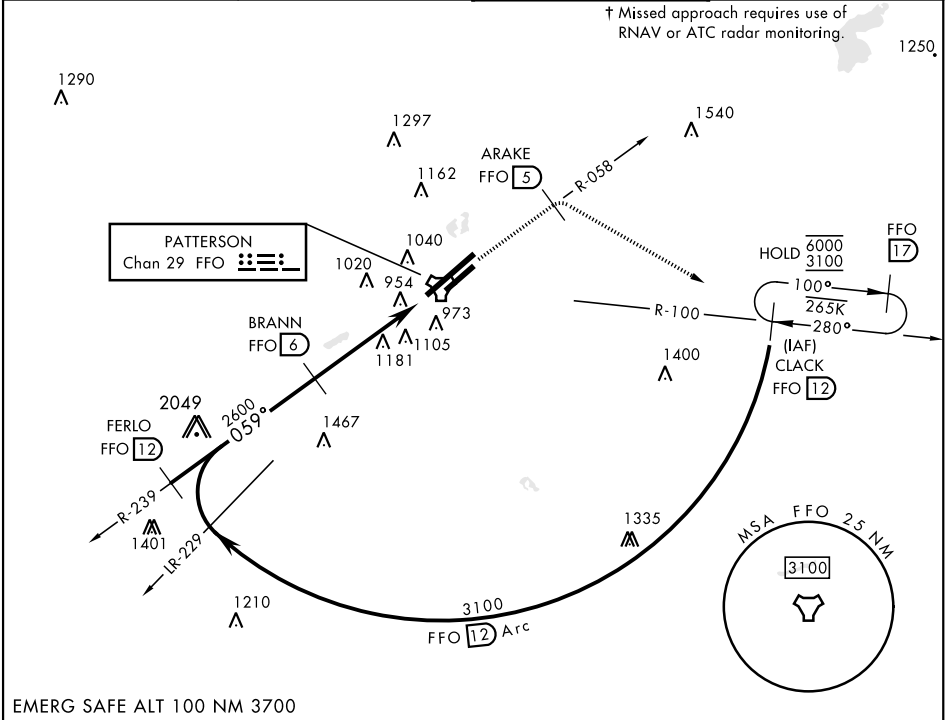
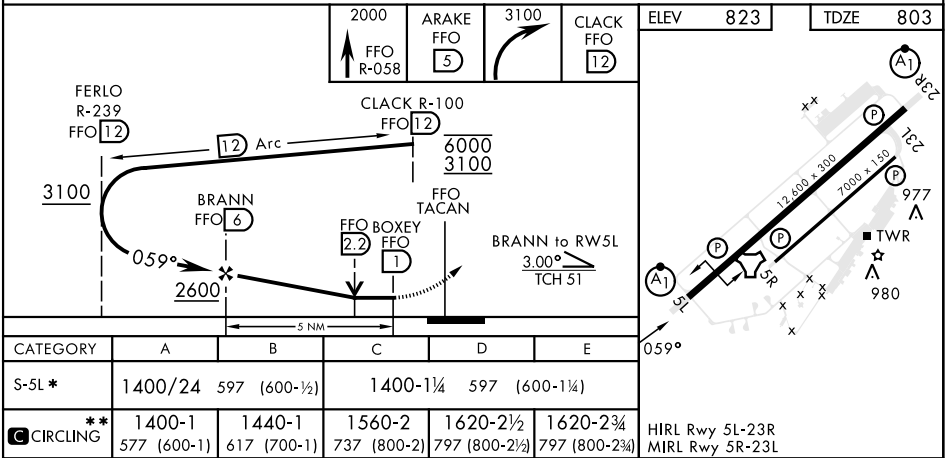


TACAN RWY 5L

TACAN FFO Chan 29	APCH CRS 059°	Rwy Ldg 12,600 TDZE 803 Arpt Elev 823	[USAF]	WRIGHT-PATTERSON AFB (KFFO)
▼ * When ALS inop, increase RVR CAT AB to 55 and vis to 1 mile, CAT CDE vis to 1¾ miles. ** When Rwy 23R VGSI inop, circling to Rwy 23R NA at night.			ALSF-1 A1	† MISSED APPROACH: Climb to 2000 via FFO R-058 to 5 DME, turn right direct CLACK climbing to 3100 and hold.
ATIS 124.475 269.9	COLUMBUS APP CON 118.85 269.275	PATTERSON TOWER 127.8 281.45	GND CON 121.8 335.8	



EMERG SAFE ALT 100 NM 3700



TACAN RWY 5L