

DAYTON, OHIO


RNAV (GPS) RWY 23R

24305

APCH CRS	Rwy Idg	12,600
233°	TDZE	823
	Arprt Elev	823

- (USAF)

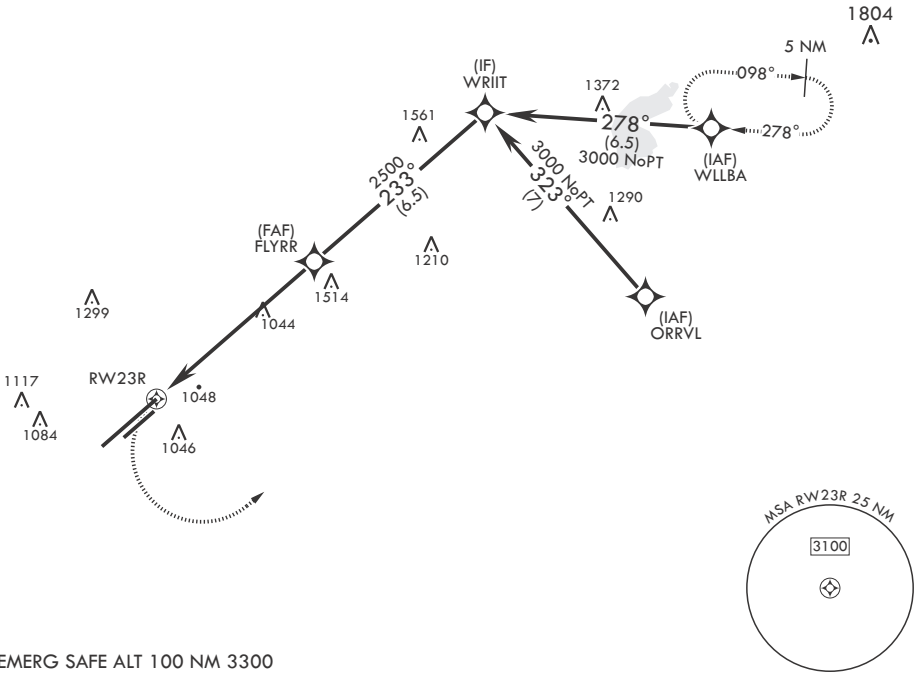
WRIGHT PATTERSON AFB (KFFO)

<p>⚠ * When ALS inop, increase CAT AB RVR to 55, vis to 1 mile; CAT CD vis to 1 3/8 miles. ** When Rwy 23R VGSI inop, circling to Rwy 23R NA at night.</p>	<p>ALSF-1</p> 	<p>MISSED APPROACH: Turn left climb to 3000 direct WLLBA waypoint and hold.</p>
--	---	---



ATIS 124.475 269.9	COLUMBUS APP CON/DEP CON 118.85 269.275	PATTERSON TOWER 127.8 281.45	GND CON 121.8 335.8
-----------------------	--	---------------------------------	------------------------

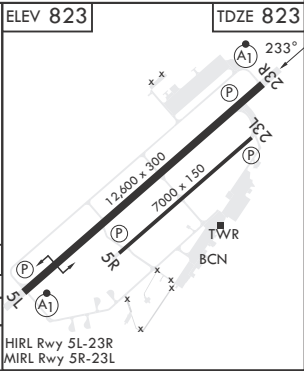
DME/DME RNP-0.3 NA

1323



EMERG SAFE ALT 100 NM 3300

	<p>WLLBA</p> <p>VGSI and descent angles not coincident. (VGSI angle 3.00 TCH 53)</p>	<p>WRIIT</p> <p>3000</p>	<p>ELEV 823</p>	<p>TDZE 823</p>
	<p>RWY 23R</p> <p>1.4 NM to RWY 23R</p> <p>≤ 2.55° TCH 53</p> <p>6 NM</p>	<p>FLYRR</p> <p>2500</p>		
CATEGORY	A	B	C	D
LNAV MDA*	1320/24 497 (500-½)	1320/50 497 (500-1)		
CIRCLING**	1380-1 557 (600-1)	1440-1 617 (700-1)	1560-2 737 (800-2)	1620-2½ 797 (800-2½)



DAYTON, OHIO

39°50'N - 84°03'W

WRIGHT PATTERSON AFB (KFFO)

Amdt 5 13OCT16

RNAV (GPS) RWY 23R

EC-2, 07 AUG 2025 to 04 SEP 2025

EC-2, 07 AUG 2025 to 04 SEP 2025