

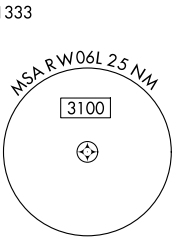
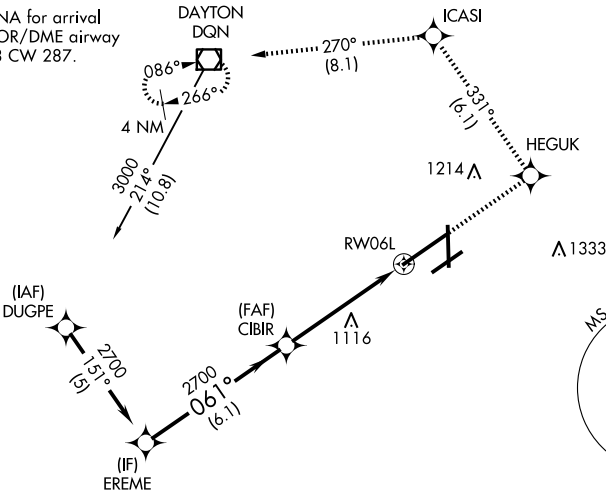
WAAS CH 42913 W06A	APP CRS 061°	Rwy Idg 10900 TDZE 998 Apt Elev 1009
--	------------------------	---

RNAV (GPS) Z RWY 6L

JAMES M COX DAYTON INTL (DAY)

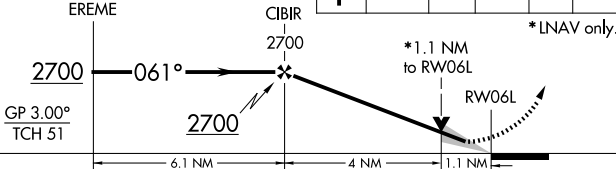
RNP APCH.		ALSF-2	MISSED APPROACH: Climb to 3000 direct HEGUK and on track 331° to ICASI and on track 270° to DQN VOR/DME and hold.	
ATIS 125.8	COLUMBUS APP CON 134.45 323.15	DAYTON TOWER 119.9 257.7	GND CON 121.9	CLNC DEL 121.75

Procedure NA for arrival on DQN VOR/DME airway radials 208 CW 287.



2049

VGSI and RNAV glidepath not coincident (VGSI Angle 3.00/TCH 67).



CATEGORY	A	B	C	D
LPV DA	1198/18		200 (200-½)	
LNAV/VNAV DA	1366/40		368 (400-¾)	
LNAV MDA	1420/24	422 (500-½)	1420/40 422 (500-¾)	1420/50 422 (500-1)
CIRCLING	1580-1	571 (600-1)	1580-1½ 571 (600-1½)	1640-2 631 (700-2)

