

APP CRS	Rwy Idg	10900
061°	TDZE	998
	Apt Elev	1009

RNAV (RNP) Y RWY 6L

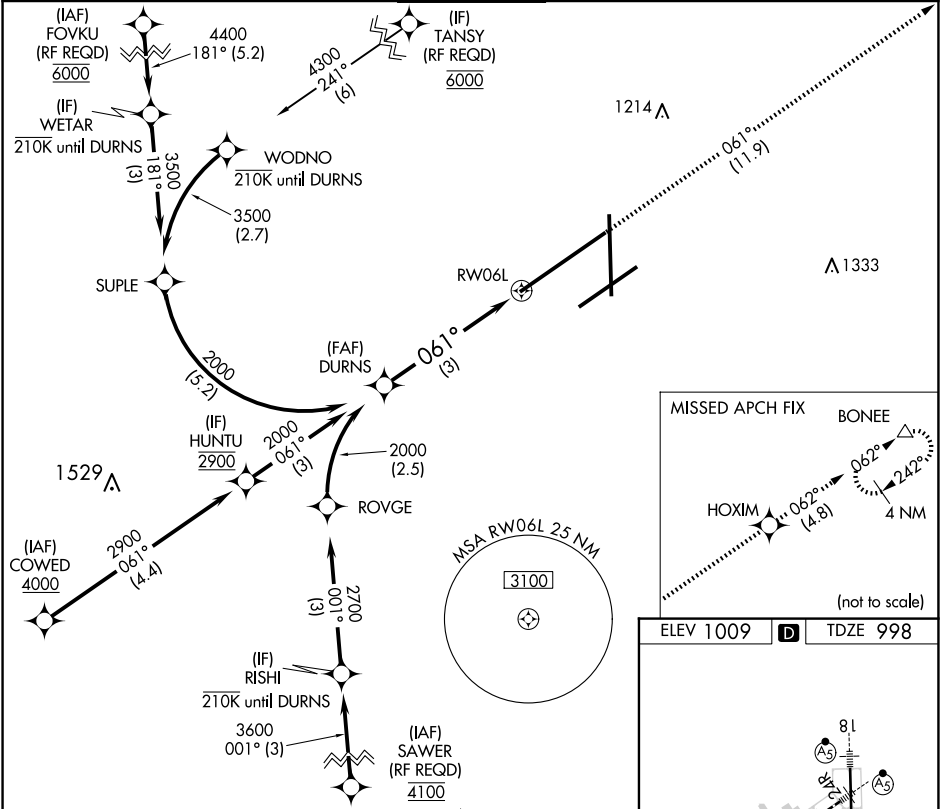
JAMES M COX DAYTON INTL (DAY)

GPS required. For uncompensated Baro-VNAV systems, procedure NA below -19°C (-2°F) or above 54°C (130°F). For inop ALS, increase RNP 0.10 all Cats visibility to RVR 6000. For inop ALS, increase RNP 0.30 all Cats visibility to 1 ½.

ALSIF-2

MISSED APPROACH: Climb to 3000 on the RNAV missed approach route to BONEE and hold.

ATIS 125.8	COLUMBUS APP CON 134.45 323.15	DAYTON TOWER 119.9 257.7	GND CON 121.9	CLNC DEL 121.75
---------------	-----------------------------------	-----------------------------	------------------	--------------------



VGSI and RNAV glidepath not coincident DURNS (VGSI Angle 3.00/TCH 67).

2000 GP 3.00° TCH 51

3000 tr 061°

HOXIM tr 062°

BONEE

See planview for multiple IF locations.

3 NM

CATEGORY A B C D

RNP 0.10 DA 1358/40 360 (400-¾)

RNP 0.30 DA 1464/60 466 (500-1½)

AUTHORIZATION REQUIRED

