

25163

Rwy Ldg	8502
TDZE	1008
Apt Elev	1009

RNAV (GPS) RWY 36

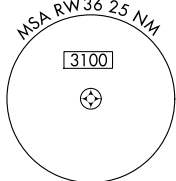
JAMES M COX DAYTON INTL (DAY)

JAMES M COX DAYTON INTL (DAY)

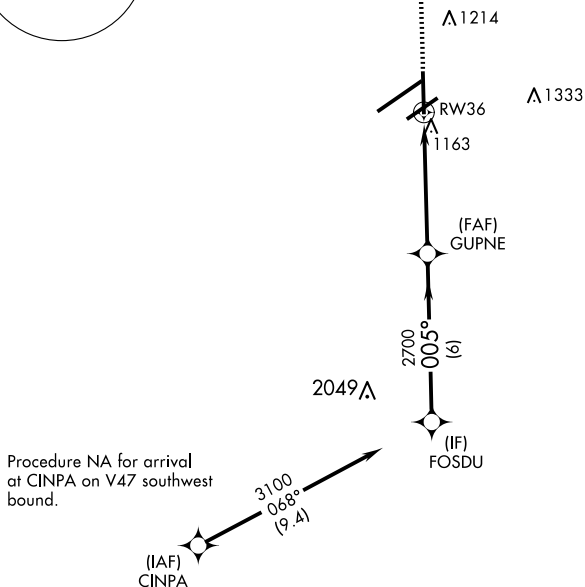


For uncompensated Baro-VNAV systems, LNAV/VNAV NA below -19°C (-2°F) or above 54°C (130°F). DME/DME RNP-0.3 NA. Rwy 36 helicopter visibility reduction below $\frac{3}{4}$ SM NA.

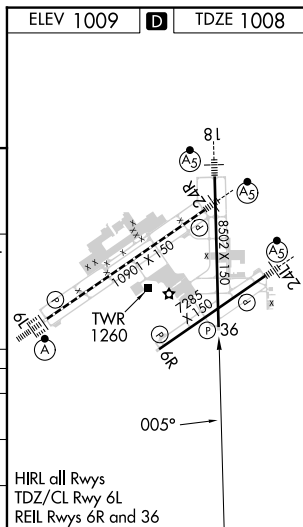
MISSED APPROACH: Climb to 3000 direct to KIRON and hold.

CLNC DEL
121,75

MISSED APCH FIX
4 NM
005° 185°
KIRON



Procedure NA for arrival
at CINPA on V47 southwest
bound.



39°54'N-84°13'W

JAMES M COX DAYTON INTL (DAY)
RNAV (GPS) RWY 36