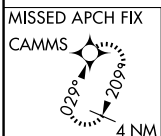
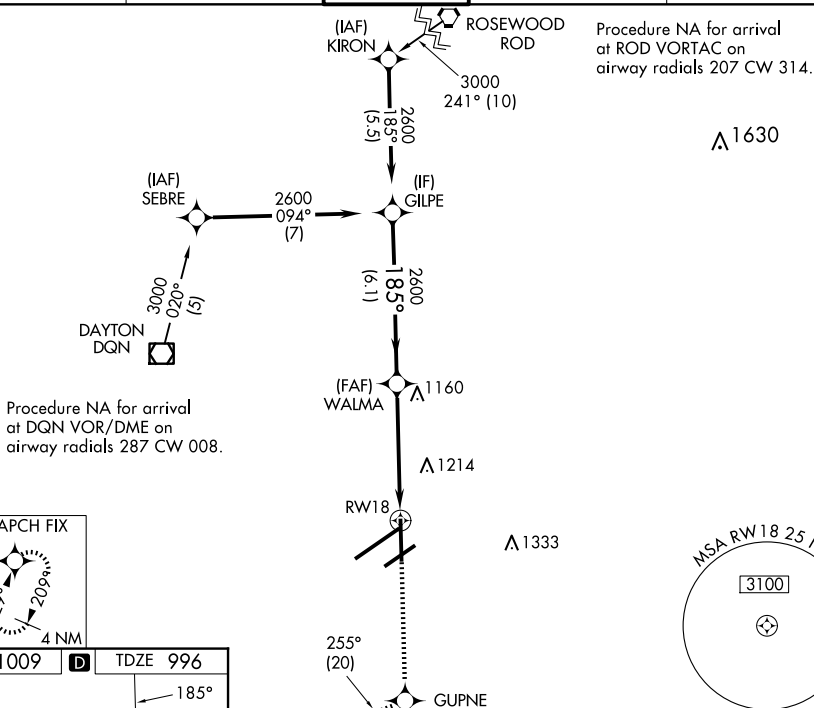


25163

RNAV (GPS) RWY 18
JAMES M COX DAYTON INTL (DAY)

MALSR

MISSED APPROACH: Climb to 3000 direct GUPNE and track 255° to CAMMS and hold.

CLNC DEL
121.75

3000 ↑	GUPNE ✦	tr 255°	CAMMS △				
* LNAV only				* 1.2 NM to RW18			
1.2 NM				3.7 NM		6.1 NM	
CATEGORY	A		B		C		D
LPV DA **			1196/24		200 (200-½)		
LNAV/VNAV DA			1274/24		278 (300-½)		
LNAV MDA	1420/24		424 (500-½)		1420/40		424 (500-¾)
CIRCLING	1580-1		571 (600-1)		1580-1½ 571 (600-1½)		1640-2 631 (700-2)

HIRL all Rwy
TDZ/CL Rwy 6L
REIL Rwy 6R and 36

JAMES M COX DAYTON INTL (DAY)
RNAV (GPS) RWY 18